



# NetworX

## NX-2192E PINPOINT SYSTEM INSTALLATION MANUAL

### TABLE OF CONTENTS

1.	GENERAL DESCRIPTION.....	2
2.	INSTALLATION .....	2
3.	DEVICE ADDRESS CONFIGURATION.....	2
4.	TERMINAL DESCRIPTIONS .....	2
5.	WIRING DIAGRAM .....	3
6.	MAXIMUM NUMBER OF DEVICES PER WIRE RUN .....	4
7.	ENROLLING THE PINPOINT SYSTEM.....	4
8.	PROGRAMMING THE MODULE.....	4
9.	PROGRAMMING SEQUENCE EXAMPLE .....	4
10.	PROGRAMMING LOCATION GUIDE .....	5
11.	BATTERY CALCULATION WORKSHEET.....	8
12.	NX-2192E PROGRAMMING WORKSHEETS .....	9
13.	APPENDIX 1 PINPOINT ADDRESS WORKSHEET.....	40
14.	UL & CE NOTICES .....	44
15.	SPECIFICATIONS.....	44

© 2004 GE All rights reserved. Printed in the USA.  
 NetworX™ is a trademark of the GE Security companies.

*These instructions do not purport to cover all details or variations in equipment nor to provide every possible contingency to be met during installation, operation, and maintenance. If further information is desired or if particular problems arise that are not covered sufficiently for the purchaser's purpose, the matter should be referred to GE Security, Gladewater, Texas, USA.*

*This document contains proprietary information of GE Security, USA and is furnished to its customer solely to assist that customer in the installation, testing, operations, and/or maintenance of the equipment described. This document shall not be reproduced in whole or in part nor shall its contents be disclosed to any third party without the written approval of GE Security. Please refer to the current GE Security product catalog for detailed warranty information.*

1420 N. Main  
 Gladewater, TX 75647

Main	800-727-2339	Technical Support	800-727-2339
Outside the US	903-845-6941	Tech Support Fax	903-845-8409
Main Fax	903-845-6811	Sales & Literature	800-547-2556
Web:	<a href="http://www.caddx.com">www.caddx.com</a>	<a href="http://www.ge-security.com">www.ge-security.com</a>	

## 1. GENERAL DESCRIPTION

The NX-2192E is a microprocessor-controlled point ID bus interface module for the NX-8E control panel. The PinPoint System provides two-wire bidirectional communications with up to 255 individually addressed devices. The total number of devices in a system is limited by the I/O capability of the panel. The NX-8E can support a maximum of 192 zones mapped to 192 input device addresses and an additional 48 addresses for output devices. Warranty information is provided in the Interlogix product catalog.

## 2. INSTALLATION

The NX-2192E is installed in the NX-8E control panel enclosure. Three loop outputs are provided for interface with the point ID devices. A single loop output can support the full 255 point ID devices as long as the wire run limits are not exceeded. The total number of devices can be distributed across the three loop outputs to meet wire run limit requirements.

## 3. DEVICE ADDRESS CONFIGURATION

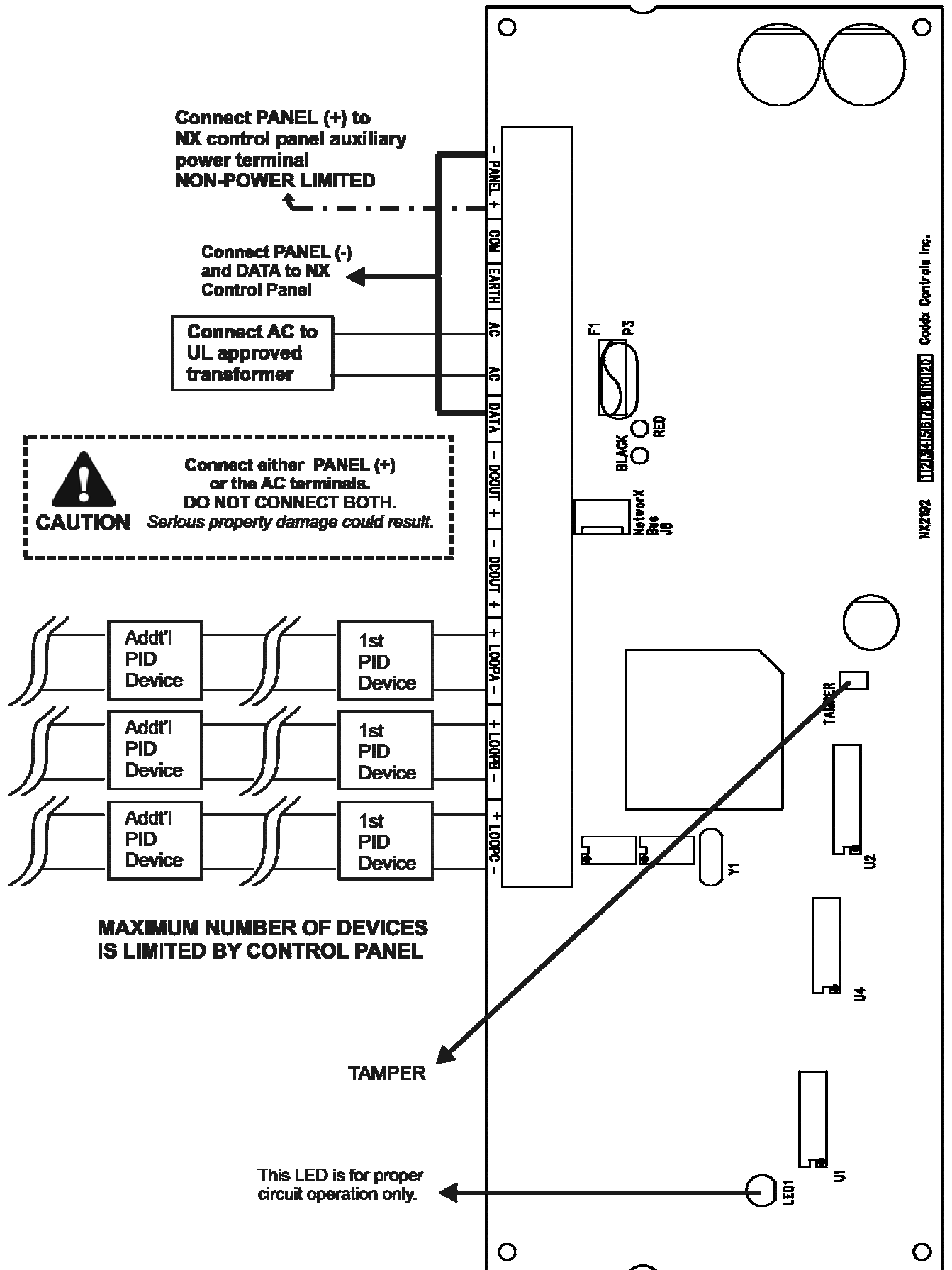
Each device on the PinPoint System must be configured for a unique address with the range of 0 through 254. Address 255 is reserved. Setting the address switches at the time that each device is installed will determine the address selection. Please refer to the worksheet in Appendix1 on page 40.

## 4. TERMINAL DESCRIPTIONS

TERMINAL	DESCRIPTION
PANEL-	Supply Common terminal.
PANEL+	DC supply terminal for powering the NX-2192E.
COM	Common terminal.
EARTH	Earth Ground.
AC	AC Input. Connect to a 16.5V 25, 40, or 50VA Class II UL approved transformer. *
AC	AC Input. Connect to a 16.5V 25, 40, or 50VA Class II UL approved transformer. *
DATA	Connect to the NX8 / NX-8E control panel <b>DATA</b> terminal. This terminal is the <i>incoming</i> data-signaling terminal to the NX-2192E. The maximum total wire run from the control panel to all devices including the NX-2192E is 2500 feet. ⚠ <b>WARNING:</b> This terminal is not protected from damage by mis-connection. Observe caution when connecting.
DCOUT-	Connect to the NX-8 / NX-8E control panel <b>COMMON</b> terminal. This terminal supplies the common side of the power to the NX-2192E.
DCOUT+	Not used at this time.
DCOUT-	Supply Common terminal.
DCOUT+	Used only when supplied by UL approved transformer in 12V mode. <i>Rating: 600mA when using 12V transformer</i>
LOOPA+	Loop A Point ID bus supply terminal.
LOOPA-	Loop A Point ID bus return terminal.
LOOPB+	Loop B Point ID bus supply terminal.
LOOPB-	Loop B Point ID bus return terminal.
LOOPC+	Loop C Point ID bus supply terminal.
LOOPC-	Loop C Point ID bus return terminal.

\* For UL certified installations, the NX-2192E must be powered by the NX-8E control panel.

## 5. WIRING DIAGRAM



## 6. MAXIMUM NUMBER OF DEVICES PER WIRE RUN

The number of devices on an individual wire run must not exceed the number listed in the following table. If a star configuration is used, the total wire length must not exceed 10000 feet per loop output.

Table 6-1

Wire Gauge	Length in Feet				
	1000	2500	5000	7500	10000
22AWG	170	20	--	--	--
18AWG	255	170	45	5	--
16AWG	255	255	120	55	20
14AWG	255	255	240	135	80

## 7. ENROLLING THE PINPOINT SYSTEM

The NX-8E has the ability to automatically find and store in its memory the presence of all keypads, zone expanders, wireless receivers and any other modules connected to the data terminal. This allows these modules to be supervised by the control panel. To enroll the modules enter the Program Mode of the NX-8E control panel, and when the Program Mode is exited, it will automatically enroll the devices. The enrolling process takes about 12 seconds, during which time the "Service" LED will illuminate. User codes will not be accepted during the enrolling process. Once a module is enrolled, if it is not detected by the control, the "Service" LED will illuminate.

## 8. PROGRAMMING THE MODULE

- To enter the program mode, press [\*]-[8]. All of the function key LEDs will begin to flash.
- Enter the "Go To Program" code (default is [9]-[7]-[1]-[3]). If the code was valid, the Service LED will flash, and the function LEDs will illuminate steady, indicating the device to program should be entered.
- Press [4] [4] [#] for the fixed address of the PinPoint module. The Armed LED will illuminate while it is waiting for a programming location to be entered.
- Enter the desired programming location. The Armed LED will begin to flash while a programming location is being entered.
- Press [#]. If this is a valid location, the Armed LED will extinguish, the Ready LED will illuminate, and the binary data for the first segment of this location will be shown on the zone LEDs.
- To change the data, enter the data followed by [\*]. The data will be entered, and the location will automatically increment to the next segment. The data for that segment will be displayed. This procedure is repeated until the last segment is reached. Pressing the [#] key will exit from this location. To review the data, repeat the above procedure, pressing the [\*] key without entering data first. Each time the [\*] key is pressed the next segment is displayed.

Programming data is always one of two types of data. The first type is numerical, and can take on values from 0-255 or 0-15 depending on the segment size. The second type is a feature selection type. Feature selection data is used to turn features on or off. **LCD Keypad Users Note:** All steps required for programming are the same as the aforementioned LED keypad. The LCD keypad display will prompt you for the data required. While in the programming mode, and not in a location, the number in parenthesis is the location you were previously changing. For example, if the display reads "Enter location, then # (5)", it is reminding you that location 5 was the last location you programmed. In feature selection data, the numbers of the enabled features will be displayed. However, the features not enabled will display a hyphen (-).

### IMPORTANT NOTES

To program additional points after the Program Mode is exited:

1. Re-Enter the Program Mode using the instructions in Section 8, page 4 of this manual.
2. Enter Location 0 and press [1] to initialize the "Program Mode Designation"
3. Program the desired location(s).

## 9. PROGRAMMING SEQUENCE EXAMPLE

The following example assumes the installation of a single input module on the bus as address number 5, with its input mapped to zone number 9:

- Enter system program mode on the NX-2192E as previously described.
- Select the configuration location for zone number 9 by entering [9] [#].
- Input for segment 1 is requested. Select the device address of 5 (binary) by entering [2]-[4]-[5]-[6]-[7]-[8] so that the sequence of (1\_3\_\_\_\_) is displayed.
- Press [\*] [#] to exit this location.
- Select the PinPoint program mode location by entering [0] [#].
- Input for segment 1 is requested. Enable PinPoint program mode by entering [1] [\*].
- Wait for the keypad to sound a ding-dong. Press [EXIT] [EXIT] to exit the system program mode.
- Refer to Location 0 description for troubleshooting if the keypad does not ding-dong after PinPoint program mode is complete.

## 10. PROGRAMMING LOCATION GUIDE

<b>LOCATION 0</b>	<b>POINT ID PROGRAM MODE DESIGNATION</b>	<b>16 segments of numerical data</b>
-------------------	--	--------------------------------------

Location 0 is used to communicate to the PID bus interface to enter PID Program Mode.

**Segment 1** must be set to [1] to “learn” points. While in this mode, all nodes able to communicate will be enabled and mapped to pre-programmed zones. With this in mind, prior to entering PID program mode, all zones must be either programmed with a serial number (for devices without a dip switch) or a physical address (for devices with a dip switch). If programming is a success and no errors were reported, a “0” will automatically be written into segment 1 of this location and the keypad will sound a ding-dong. Otherwise, the number of errors will be written and the keypad will sound a triple beep, indicating that errors were found. If errors were found, segments 2-16 will contain the locations of the first 15 zones with errors. Zone locations may then be examined to determine the type of error that occurred.

- ☛ **NOTE:** If the 8 on-board zones are enabled, then zones 1-8 are already used and may not have a PID address mapped to them. If zone doubling is enabled, then zones 1-16 are already used and may not have a PID address mapped to them.

**Segments 2-16** are “read only”.

<b>LOCATIONS 1 – 192</b>	<b>PROGRAMMING NODE INFORMATION ZONES 1 - 192</b>	<b>3 segments of binary data</b>
--------------------------	---	----------------------------------

**Segment 1** is used to store the **physical address** of the corresponding node. Factory default is 255. Whether or not the device has a dip switch, this location is programmed by the installer prior to entering PID Program Mode.

**Segment 2** is used to store the **input number** for multiple input/output devices. Factory default is 1.

**Segment 3** is used to display an **error code** if an error(s) occurred during the last PID program mode cycle. The following table provides a description of the types of errors that may occur:

**Table 10-1**

ERROR CODE	DESCRIPTION	ERROR CODE	DESCRIPTION
1	Node is missing.	5	Auto enroll error.
2	Multiple node responded.	6	Reserved.
3	Communication error.	7	Reserved.
4	Device type mismatch.	8	Zone programmed but node not enabled.

<b>LOCATION 193</b>	<b>DEVICE OPTIONS</b>	<b>1 segment of feature selection data</b>
---------------------	-----------------------	--

**Segment 1** selects the following options:

- 1 = Reserved.
- 2 = "On" if Loop A should be enabled; "Off" if disabled.
- 3 = "On" if Loop B should be enabled; "Off" if disabled.
- 4 = "On" if Loop C should be enabled; "Off" if disabled.
- 5 = "On" if 24V mode should be enabled; "Off" if 12V mode.
- 6 = "On" if the NX-2192E is powered from AUX + terminals of the control panel. Turning this option "On" disables NX-2192E power monitoring.
- 7 = "On" if any AC Fail condition should be communicated to the central monitoring station. Option 6 overrides this condition occurring on the NX-2192E, but not individual nodes.
- 8 = "On" if any Low Battery condition should be communicated to the central monitoring station. Option 6 overrides this condition occurring on the NX-2192E, but not individual nodes.

<b>LOCATIONS 194 - 241</b>	<b>NODE INFORMATION FOR OUTPUTS 1 –48</b>	<b>3 segments of binary data</b>
----------------------------	---	----------------------------------

**Segment 1** is used to store the **physical address** of the corresponding node. Whether or not the device has a dip switch, this location is programmed by the installer prior to entering PID Program Mode. This segment can also be used as an indicator that the corresponding node had an error during the last PID Program Mode cycle, because any error causes this segment to be defaulted to address **255**.

**Segment 2** is used to store the **output number** for multiple input/output devices. Default is 1.

**Segment 3** is used to display an **error code** if an error or errors occurred during the last PID Program Mode cycle. In the following Table 2.1, a description of the types of errors that may occur and the bit in the error code associated with the error is outlined.

**Table 10-2**

ERROR CODE	DESCRIPTION
1	Node is missing.
2	Multiple node responded.
3	Communication error.
4	Device type mismatch.
5	Auto enroll error.
6	Reserved.
7	Output programmed to non-output device.
8	Output programmed but node not enabled.

<b>LOCATION 242 – 336 (EVEN LOC)</b>	<b>EVENT &amp; TIME FOR OUTPUTS 1 - 48</b>	<b>2 segments of numerical data</b>
--------------------------------------	--	-------------------------------------

**Segment 1** is used to select the particular event that will trigger the output. Refer to Table 10-3 for the specific events that can be selected.

**Segment 2** is used to select the amount of time an output will remain activated when an output triggers. If this location is programmed as a zero, the output will follow the particular event.

**Table 10-3**

#	Event	#	Event	#	Event
0	Always On	11	Smoke Power Reset	22	Disarmed
1	AC Fail (control or exp.) does not follow AC Fail delay time	12	Yelping Siren	23	Ready to Arm
2	Low Battery (control or exp.)	13	Steady Siren	24	Not Ready to Arm
3	Dynamic Battery Test Time	14	Any Siren	25	Fire
4	Listen In	15	Steady Siren (temporal)	26	Fire Trouble
5	Line Seizure	16	Any Siren (temporal)	27	Chime
6	Telephone Line Fault	17	Alarm Memory	28	Beeping Keypad
7	Program Mode	18	Entry	29♦	Aux 1 Keypad Function
8	Over-current (control or exp.)	19	Exit	30♦	Aux 2 Keypad Function
9	Box Tamper (control or exp.)	20	Entry or Exit	31♦	Panic Keypad Function
10	Siren Tamper (control or exp.)	21	Armed	32♦	Code Entry (set in locs 338 - 481)

♦ *If set to follow condition, these events will be one second.*

<b>LOCATION 243 – 337 (ODD LOC)</b>	<b>SPECIAL FEATURES FOR OUTPUTS 1 - 48</b>	<b>2 segments of feature selection data</b>
-------------------------------------	--	---

**Segment 1** selects the following special conditions:

- 1 = "On" if output should time in minutes; "Off" if output times in seconds.
- 2 = "On" if output should latch until a code is entered; "Off" for timed.
- 3 = "On" if output should stop time when a code is entered.
- 4 = "On" for inverted output.
- 5 = "On" disables output during listen-in (only events 12-16).
- 6 = Reserved.
- 7 = Reserved.
- 8 = Reserved.

**Segment 2** selects the following partitions:

- 1 = "On" if the event should activate when it occurs in Partition 1.
- 2 = "On" if the event should activate when it occurs in Partition 2.
- 3 = "On" if the event should activate when it occurs in Partition 3.
- 4 = "On" if the event should activate when it occurs in Partition 4.
- 5 = "On" if the event should activate when it occurs in Partition 5.
- 6 = "On" if the event should activate when it occurs in Partition 6.
- 7 = "On" if the event should activate when it occurs in Partition 7.
- 8 = "On" if the event should activate when it occurs in Partition 8.

Table 10-4

**TABLE 10-4  
IS USED TO  
PROGRAM  
LOCATIONS  
338 - 481**

LED	DESCRIPTION	OUTPUTS
1	"On" if code will activate output; "Off" if it will not.	1, 9, 17, 25, 33, 41
2	"On" if code will activate output; "Off" if it will not.	2, 10, 18, 26, 34, 42
3	"On" if code will activate output; "Off" if it will not.	3, 11, 19, 27, 35, 43
4	"On" if code will activate output; "Off" if it will not.	4, 12, 20, 28, 36, 44
5	"On" if code will activate output; "Off" if it will not.	5, 13, 21, 29, 37, 45
6	"On" if code will activate output; "Off" if it will not.	6, 14, 22, 30, 38, 46
7	"On" if code will activate output; "Off" if it will not.	7, 15, 23, 31, 39, 47
8	"On" if code will activate output; "Off" if it will not.	8, 16, 24, 32, 40, 48

<b>LOCATIONS 338 - 361</b>	<b>CODES 1 – 240 OUTPUTS 1 – 8 ENABLE</b>	<b>10 segments of feature selection data</b>
----------------------------	---	--

When activating outputs with a user code (event #32), locations 338 - 361 can be used to restrict certain codes from activating certain outputs. Each location contains 10 segments. Location 338 / segment 1 corresponds to user 1; segment 10 corresponds to user 10; and finally location 361 / segment 1 corresponds to user 231; Segment 10 corresponds to user 240. The LEDs correspond to **outputs 1 - 8**. Refer to Table 10-4 for descriptions.

<b>LOCATIONS 362 - 385</b>	<b>CODES 1 – 240 OUTPUTS 9 - 16 ENABLE</b>	<b>10 segments of feature selection data</b>
----------------------------	--	--

When activating outputs with a user code (event #32), locations 362 - 385 can be used to restrict certain codes from activating certain outputs. Each location contains 10 segments. Location 362 / segment 1 corresponds to user 1; segment 10 corresponds to user 10; and finally location 385 / segment 1 corresponds to user 231; Segment 10 corresponds to user 240. The LEDs correspond to **outputs 9 - 16**. Refer to Table 10-4 for descriptions.

<b>LOCATIONS 386 - 409</b>	<b>CODES 1 – 240 OUTPUTS 17 - 24 ENABLE</b>	<b>10 segments of feature selection data</b>
----------------------------	---	--

When activating outputs with a user code (event #32), locations 386 - 409 can be used to restrict certain codes from activating certain outputs. Each location contains 10 segments. Location 386 / segment 1 corresponds to user 1; segment 10 corresponds to user 10; and finally location 409 / segment 1 corresponds to user 231; Segment 10 corresponds to user 240. The LEDs correspond to **outputs 17 - 24**. Refer to Table 10-4 for descriptions.

<b>LOCATIONS 410 - 433</b>	<b>CODES 1 – 240 OUTPUTS 25 - 32 ENABLE</b>	<b>10 segments of feature selection data</b>
----------------------------	---	--

When activating outputs with a user code (event #32), locations 410 - 433 can be used to restrict certain codes from activating certain outputs. Each location contains 10 segments. Location 410 / segment 1 corresponds to user 1; segment 10 corresponds to user 10; and finally location 433 / segment 1 corresponds to user 231; Segment 10 corresponds to user 240. The LEDs correspond to **outputs 25 - 32**. Refer to Table 10-4 for descriptions.

<b>LOCATIONS 434 - 457</b>	<b>CODES 1 – 240 OUTPUTS 33 - 40 ENABLE</b>	<b>10 segments of feature selection data</b>
----------------------------	---	--

When activating outputs with a user code (event #32), locations 434 - 457 can be used to restrict certain codes from activating certain outputs. Each location contains 10 segments. Location 434 / segment 1 corresponds to user 1; segment 10 corresponds to user 10; and finally location 457 / segment 1 corresponds to user 231; Segment 10 corresponds to user 240. The LEDs correspond to **outputs 33 - 40**. Refer to Table 10-4 for descriptions.

<b>LOCATIONS 458 - 481</b>	<b>CODES 1 – 240 OUTPUTS 41 - 48 ENABLE</b>	<b>10 segments of feature selection data</b>
----------------------------	---	--

When activating outputs with a user code (event #32), locations 458 - 481 can be used to restrict certain codes from activating certain outputs. Each location contains 10 segments. Location 458 / segment 1 corresponds to user 1; segment 10 corresponds to user 10; and finally location 481 / segment 1 corresponds to user 231; Segment 10 corresponds to user 240. The LEDs correspond to **outputs 41 - 48**. Refer to Table 10-4 for descriptions.

# 11. BATTERY CALCULATION WORKSHEET

## 1 TOTAL STANDBY CURRENT

System Component	Qty		Standby Current		TOTAL STANDBY CURRENT
NX-8E-CF	1	X	60mA	=	60mA
NX-870E	1	X	20mA	=	20mA
NX-148E		X	75mA	=	
NX-208E Aux+		X	13mA	=	
NX-216E		X	30mA	=	
NX-320E		X	10mA	=	
NX-507E		X	10mA	=	
NX-1700E		X	40mA	=	
NX-2192E		X	170mA	=	
			<b>TOTAL</b>	=	

## 2 TOTAL ALARM CURRENT

System Component	Qty		Device Alarm Current		TOTAL ALARM CURRENT
NX-8E-CF	1	X	210mA	=	210mA
NX-870E	1	X	110mA	=	110mA
NX-148E		X	110mA	=	
NX-208E Aux+		X	13mA	=	
NX-216E		X	60mA	=	
NX-320E		X	10mA	=	
NX-507E		X	310mA	=	
NX-1700E		X	110mA	=	
NX-2192E		X	170mA	=	
			<b>TOTAL</b>	=	

## 3 STANDBY AMP HOURS

$$\frac{\text{mA}}{\text{Total Standby Current (Step 1)}} \times \text{Conversion Factor } (.001 \text{ Amp/mA}) \times \frac{\text{Hrs}}{\text{Required Hours in Standby}} = \frac{\text{Ah}}{\text{Standby Amp Hours}}$$

## 4 ALARM HOURS

$$\frac{\text{mA}}{\text{Total Alarm Current (Step 2)}} \times \text{Conversion Factor } (.001 \text{ Amp/mA}) \times \frac{\text{Mins}}{\text{Required Minutes in Standby}} \times \text{Conversion Factor } (.0167 \text{ Hr/Min}) = \frac{\text{Ah}}{\text{Alarm Hours}}$$

## 5 MINIMUM BATTERY POWER REQUIRED

$$\frac{\text{mA}}{\text{Standby Amp hours (Step 3)}} + \frac{\text{Alarm Amp Hours (Step 4)}}{\text{Minimum Battery Power Required}} = \frac{\text{Ah}}{\text{Minimum Battery Power Required}}$$

## 6 TOTAL STANDBY BATTERY POWER

$$\frac{\text{Minimum Battery Power (Step 5)}}{\text{Total Standby Battery Power}} + \frac{1.15}{\text{Battery Derating Factor}} = \frac{\text{Total Standby Battery Power}}$$



## 12. NX-2192E Programming Worksheets

(Defaults are printed in *bold italics* text.)

LOC	PAGE	DESCRIPTION			
0	5	<b>PROGRAM MODE DESIGNATION</b> (Segment 1 must be set to [1] in order to 'learn' points)			
LOC	PAGE	PROGRAMMING NODE INFORMATION FOR ZONES 1 - 192			
		Segment #1 Physical address	Segment #2 Input number	Segment #3 Error code	Notes
1	5	<b>12345678</b>	<b>1</b> _____	__	
2	5	<b>12345678</b>	<b>1</b> _____	__	
3	5	<b>12345678</b>	<b>1</b> _____	__	
4	5	<b>12345678</b>	<b>1</b> _____	__	
5	5	<b>12345678</b>	<b>1</b> _____	__	
6	5	<b>12345678</b>	<b>1</b> _____	__	
7	5	<b>12345678</b>	<b>1</b> _____	__	
8	5	<b>12345678</b>	<b>1</b> _____	__	
9	5	<b>12345678</b>	<b>1</b> _____	__	
10	5	<b>12345678</b>	<b>1</b> _____	__	
11	5	<b>12345678</b>	<b>1</b> _____	__	
12	5	<b>12345678</b>	<b>1</b> _____	__	
13	5	<b>12345678</b>	<b>1</b> _____	__	
14	5	<b>12345678</b>	<b>1</b> _____	__	
15	5	<b>12345678</b>	<b>1</b> _____	__	
16	5	<b>12345678</b>	<b>1</b> _____	__	
17	5	<b>12345678</b>	<b>1</b> _____	__	
18	5	<b>12345678</b>	<b>1</b> _____	__	
19	5	<b>12345678</b>	<b>1</b> _____	__	
20	5	<b>12345678</b>	<b>1</b> _____	__	
21	5	<b>12345678</b>	<b>1</b> _____	__	
22	5	<b>12345678</b>	<b>1</b> _____	__	
23	5	<b>12345678</b>	<b>1</b> _____	__	
24	5	<b>12345678</b>	<b>1</b> _____	__	
25	5	<b>12345678</b>	<b>1</b> _____	__	
26	5	<b>12345678</b>	<b>1</b> _____	__	
27	5	<b>12345678</b>	<b>1</b> _____	__	
28	5	<b>12345678</b>	<b>1</b> _____	__	
29	5	<b>12345678</b>	<b>1</b> _____	__	
30	5	<b>12345678</b>	<b>1</b> _____	__	
31	5	<b>12345678</b>	<b>1</b> _____	__	
32	5	<b>12345678</b>	<b>1</b> _____	__	
33	5	<b>12345678</b>	<b>1</b> _____	__	
34	5	<b>12345678</b>	<b>1</b> _____	__	
35	5	<b>12345678</b>	<b>1</b> _____	__	
36	5	<b>12345678</b>	<b>1</b> _____	__	
37	5	<b>12345678</b>	<b>1</b> _____	__	
38	5	<b>12345678</b>	<b>1</b> _____	__	
39	5	<b>12345678</b>	<b>1</b> _____	__	
40	5	<b>12345678</b>	<b>1</b> _____	__	
41	5	<b>12345678</b>	<b>1</b> _____	__	
42	5	<b>12345678</b>	<b>1</b> _____	__	
43	5	<b>12345678</b>	<b>1</b> _____	__	
44	5	<b>12345678</b>	<b>1</b> _____	__	
45	5	<b>12345678</b>	<b>1</b> _____	__	
46	5	<b>12345678</b>	<b>1</b> _____	__	
47	5	<b>12345678</b>	<b>1</b> _____	__	

LOC	PAGE	PROGRAMMING NODE INFORMATION FOR ZONES 1 - 192			
		Segment #1 Physical address	Segment #2 Input number	Segment #3 Error code	Notes
48	5	1 2 3 4 5 6 7 8	1 _____	__	
49	5	1 2 3 4 5 6 7 8	1 _____	__	
50	5	1 2 3 4 5 6 7 8	1 _____	__	
51	5	1 2 3 4 5 6 7 8	1 _____	__	
52	5	1 2 3 4 5 6 7 8	1 _____	__	
53	5	1 2 3 4 5 6 7 8	1 _____	__	
54	5	1 2 3 4 5 6 7 8	1 _____	__	
55	5	1 2 3 4 5 6 7 8	1 _____	__	
56	5	1 2 3 4 5 6 7 8	1 _____	__	
57	5	1 2 3 4 5 6 7 8	1 _____	__	
58	5	1 2 3 4 5 6 7 8	1 _____	__	
59	5	1 2 3 4 5 6 7 8	1 _____	__	
60	5	1 2 3 4 5 6 7 8	1 _____	__	
61	5	1 2 3 4 5 6 7 8	1 _____	__	
62	5	1 2 3 4 5 6 7 8	1 _____	__	
63	5	1 2 3 4 5 6 7 8	1 _____	__	
64	5	1 2 3 4 5 6 7 8	1 _____	__	
65	5	1 2 3 4 5 6 7 8	1 _____	__	
66	5	1 2 3 4 5 6 7 8	1 _____	__	
67	5	1 2 3 4 5 6 7 8	1 _____	__	
68	5	1 2 3 4 5 6 7 8	1 _____	__	
69	5	1 2 3 4 5 6 7 8	1 _____	__	
70	5	1 2 3 4 5 6 7 8	1 _____	__	
71	5	1 2 3 4 5 6 7 8	1 _____	__	
72	5	1 2 3 4 5 6 7 8	1 _____	__	
73	5	1 2 3 4 5 6 7 8	1 _____	__	
74	5	1 2 3 4 5 6 7 8	1 _____	__	
75	5	1 2 3 4 5 6 7 8	1 _____	__	
76	5	1 2 3 4 5 6 7 8	1 _____	__	
77	5	1 2 3 4 5 6 7 8	1 _____	__	
78	5	1 2 3 4 5 6 7 8	1 _____	__	
79	5	1 2 3 4 5 6 7 8	1 _____	__	
80	5	1 2 3 4 5 6 7 8	1 _____	__	
81	5	1 2 3 4 5 6 7 8	1 _____	__	
82	5	1 2 3 4 5 6 7 8	1 _____	__	
83	5	1 2 3 4 5 6 7 8	1 _____	__	
84	5	1 2 3 4 5 6 7 8	1 _____	__	
85	5	1 2 3 4 5 6 7 8	1 _____	__	
86	5	1 2 3 4 5 6 7 8	1 _____	__	
87	5	1 2 3 4 5 6 7 8	1 _____	__	
88	5	1 2 3 4 5 6 7 8	1 _____	__	
89	5	1 2 3 4 5 6 7 8	1 _____	__	
90	5	1 2 3 4 5 6 7 8	1 _____	__	
91	5	1 2 3 4 5 6 7 8	1 _____	__	
92	5	1 2 3 4 5 6 7 8	1 _____	__	
93	5	1 2 3 4 5 6 7 8	1 _____	__	
94	5	1 2 3 4 5 6 7 8	1 _____	__	
95	5	1 2 3 4 5 6 7 8	1 _____	__	
96	5	1 2 3 4 5 6 7 8	1 _____	__	
97	5	1 2 3 4 5 6 7 8	1 _____	__	
98	5	1 2 3 4 5 6 7 8	1 _____	__	
99	5	1 2 3 4 5 6 7 8	1 _____	__	
100	5	1 2 3 4 5 6 7 8	1 _____	__	

LOC	PAGE	PROGRAMMING NODE INFORMATION FOR ZONES 1 - 192			
		Segment #1 Physical address	Segment #2 Input number	Segment #3 Error code	Notes
101	5	1 2 3 4 5 6 7 8	1 _____	__	
102	5	1 2 3 4 5 6 7 8	1 _____	__	
103	5	1 2 3 4 5 6 7 8	1 _____	__	
104	5	1 2 3 4 5 6 7 8	1 _____	__	
105	5	1 2 3 4 5 6 7 8	1 _____	__	
106	5	1 2 3 4 5 6 7 8	1 _____	__	
107	5	1 2 3 4 5 6 7 8	1 _____	__	
108	5	1 2 3 4 5 6 7 8	1 _____	__	
109	5	1 2 3 4 5 6 7 8	1 _____	__	
110	5	1 2 3 4 5 6 7 8	1 _____	__	
111	5	1 2 3 4 5 6 7 8	1 _____	__	
112	5	1 2 3 4 5 6 7 8	1 _____	__	
113	5	1 2 3 4 5 6 7 8	1 _____	__	
114	5	1 2 3 4 5 6 7 8	1 _____	__	
115	5	1 2 3 4 5 6 7 8	1 _____	__	
116	5	1 2 3 4 5 6 7 8	1 _____	__	
117	5	1 2 3 4 5 6 7 8	1 _____	__	
118	5	1 2 3 4 5 6 7 8	1 _____	__	
119	5	1 2 3 4 5 6 7 8	1 _____	__	
120	5	1 2 3 4 5 6 7 8	1 _____	__	
121	5	1 2 3 4 5 6 7 8	1 _____	__	
122	5	1 2 3 4 5 6 7 8	1 _____	__	
123	5	1 2 3 4 5 6 7 8	1 _____	__	
124	5	1 2 3 4 5 6 7 8	1 _____	__	
125	5	1 2 3 4 5 6 7 8	1 _____	__	
126	5	1 2 3 4 5 6 7 8	1 _____	__	
127	5	1 2 3 4 5 6 7 8	1 _____	__	
128	5	1 2 3 4 5 6 7 8	1 _____	__	
129	5	1 2 3 4 5 6 7 8	1 _____	__	
130	5	1 2 3 4 5 6 7 8	1 _____	__	
131	5	1 2 3 4 5 6 7 8	1 _____	__	
132	5	1 2 3 4 5 6 7 8	1 _____	__	
133	5	1 2 3 4 5 6 7 8	1 _____	__	
134	5	1 2 3 4 5 6 7 8	1 _____	__	
135	5	1 2 3 4 5 6 7 8	1 _____	__	
136	5	1 2 3 4 5 6 7 8	1 _____	__	
137	5	1 2 3 4 5 6 7 8	1 _____	__	
138	5	1 2 3 4 5 6 7 8	1 _____	__	
139	5	1 2 3 4 5 6 7 8	1 _____	__	
140	5	1 2 3 4 5 6 7 8	1 _____	__	
141	5	1 2 3 4 5 6 7 8	1 _____	__	
142	5	1 2 3 4 5 6 7 8	1 _____	__	
143	5	1 2 3 4 5 6 7 8	1 _____	__	
144	5	1 2 3 4 5 6 7 8	1 _____	__	
145	5	1 2 3 4 5 6 7 8	1 _____	__	
146	5	1 2 3 4 5 6 7 8	1 _____	__	
147	5	1 2 3 4 5 6 7 8	1 _____	__	
148	5	1 2 3 4 5 6 7 8	1 _____	__	
149	5	1 2 3 4 5 6 7 8	1 _____	__	
150	5	1 2 3 4 5 6 7 8	1 _____	__	
151	5	1 2 3 4 5 6 7 8	1 _____	__	
152	5	1 2 3 4 5 6 7 8	1 _____	__	
153	5	1 2 3 4 5 6 7 8	1 _____	__	

PROGRAMMING NODE INFORMATION FOR ZONES 1 - 192					
LOC	PAGE	Segment #1 Physical address	Segment #2 Input number	Segment #3 Error code	Notes
154	5	1 2 3 4 5 6 7 8	1 _ _ _ _ _	_	
155	5	1 2 3 4 5 6 7 8	1 _ _ _ _ _	_	
156	5	1 2 3 4 5 6 7 8	1 _ _ _ _ _	_	
157	5	1 2 3 4 5 6 7 8	1 _ _ _ _ _	_	
158	5	1 2 3 4 5 6 7 8	1 _ _ _ _ _	_	
159	5	1 2 3 4 5 6 7 8	1 _ _ _ _ _	_	
160	5	1 2 3 4 5 6 7 8	1 _ _ _ _ _	_	
161	5	1 2 3 4 5 6 7 8	1 _ _ _ _ _	_	
162	5	1 2 3 4 5 6 7 8	1 _ _ _ _ _	_	
163	5	1 2 3 4 5 6 7 8	1 _ _ _ _ _	_	
164	5	1 2 3 4 5 6 7 8	1 _ _ _ _ _	_	
165	5	1 2 3 4 5 6 7 8	1 _ _ _ _ _	_	
166	5	1 2 3 4 5 6 7 8	1 _ _ _ _ _	_	
167	5	1 2 3 4 5 6 7 8	1 _ _ _ _ _	_	
168	5	1 2 3 4 5 6 7 8	1 _ _ _ _ _	_	
169	5	1 2 3 4 5 6 7 8	1 _ _ _ _ _	_	
170	5	1 2 3 4 5 6 7 8	1 _ _ _ _ _	_	
171	5	1 2 3 4 5 6 7 8	1 _ _ _ _ _	_	
172	5	1 2 3 4 5 6 7 8	1 _ _ _ _ _	_	
173	5	1 2 3 4 5 6 7 8	1 _ _ _ _ _	_	
174	5	1 2 3 4 5 6 7 8	1 _ _ _ _ _	_	
175	5	1 2 3 4 5 6 7 8	1 _ _ _ _ _	_	
176	5	1 2 3 4 5 6 7 8	1 _ _ _ _ _	_	
177	5	1 2 3 4 5 6 7 8	1 _ _ _ _ _	_	
178	5	1 2 3 4 5 6 7 8	1 _ _ _ _ _	_	
179	5	1 2 3 4 5 6 7 8	1 _ _ _ _ _	_	
180	5	1 2 3 4 5 6 7 8	1 _ _ _ _ _	_	
181	5	1 2 3 4 5 6 7 8	1 _ _ _ _ _	_	
182	5	1 2 3 4 5 6 7 8	1 _ _ _ _ _	_	
183	5	1 2 3 4 5 6 7 8	1 _ _ _ _ _	_	
184	5	1 2 3 4 5 6 7 8	1 _ _ _ _ _	_	
185	5	1 2 3 4 5 6 7 8	1 _ _ _ _ _	_	
186	5	1 2 3 4 5 6 7 8	1 _ _ _ _ _	_	
187	5	1 2 3 4 5 6 7 8	1 _ _ _ _ _	_	
188	5	1 2 3 4 5 6 7 8	1 _ _ _ _ _	_	
189	5	1 2 3 4 5 6 7 8	1 _ _ _ _ _	_	
190	5	1 2 3 4 5 6 7 8	1 _ _ _ _ _	_	
191	5	1 2 3 4 5 6 7 8	1 _ _ _ _ _	_	
192	5	1 2 3 4 5 6 7 8	1 _ _ _ _ _	_	

LOC	PAGE	DESCRIPTION
193	5	<b>DEVICE OPTIONS</b> 1 = Reserved. 2 = "On" if Loop A should be enabled; "Off" if disabled. 3 = "On" if Loop B should be enabled; "Off" if disabled. 4 = "On" if Loop C should be enabled; "Off" if disabled. 5 = "On" if 24V mode; "Off" if 12V mode. 6 = "On" if the NX-2192E is powered from AUX + terminals of the control panel. Turning this option "On" disables NX-2192E power monitoring. 7 = "On" if any AC Fail condition should be communicated to the central monitoring station. Option 6 overrides this condition occurring on the NX-2192E, but not individual nodes. 8 = "On" if any Low Battery condition should be communicated to the central monitoring station. Option 6 overrides this condition occurring on the NX-2192E, but not individual nodes.

LOC	PAGE	PROGRAMMING NODE INFORMATION FOR OUTPUTS 1 - 48				Notes
		OUTPUT	Segment #1 Physical address	Segment #2 Output number	Segment #3 Error code	
194	5	1	1 2 3 4 5 6 7 8	1 _____	__	
195	5	2	1 2 3 4 5 6 7 8	1 _____	__	
196	5	3	1 2 3 4 5 6 7 8	1 _____	__	
197	5	4	1 2 3 4 5 6 7 8	1 _____	__	
198	5	5	1 2 3 4 5 6 7 8	1 _____	__	
199	5	6	1 2 3 4 5 6 7 8	1 _____	__	
200	5	7	1 2 3 4 5 6 7 8	1 _____	__	
201	5	8	1 2 3 4 5 6 7 8	1 _____	__	
202	5	9	1 2 3 4 5 6 7 8	1 _____	__	
203	5	10	1 2 3 4 5 6 7 8	1 _____	__	
204	5	11	1 2 3 4 5 6 7 8	1 _____	__	
205	5	12	1 2 3 4 5 6 7 8	1 _____	__	
206	5	13	1 2 3 4 5 6 7 8	1 _____	__	
207	5	14	1 2 3 4 5 6 7 8	1 _____	__	
208	5	15	1 2 3 4 5 6 7 8	1 _____	__	
209	5	16	1 2 3 4 5 6 7 8	1 _____	__	
210	5	17	1 2 3 4 5 6 7 8	1 _____	__	
211	5	18	1 2 3 4 5 6 7 8	1 _____	__	
212	5	19	1 2 3 4 5 6 7 8	1 _____	__	
213	5	20	1 2 3 4 5 6 7 8	1 _____	__	
214	5	21	1 2 3 4 5 6 7 8	1 _____	__	
215	5	22	1 2 3 4 5 6 7 8	1 _____	__	
216	5	23	1 2 3 4 5 6 7 8	1 _____	__	
217	5	24	1 2 3 4 5 6 7 8	1 _____	__	
218	5	25	1 2 3 4 5 6 7 8	1 _____	__	
219	5	26	1 2 3 4 5 6 7 8	1 _____	__	
220	5	27	1 2 3 4 5 6 7 8	1 _____	__	
221	5	28	1 2 3 4 5 6 7 8	1 _____	__	
222	5	29	1 2 3 4 5 6 7 8	1 _____	__	
223	5	30	1 2 3 4 5 6 7 8	1 _____	__	
224	5	31	1 2 3 4 5 6 7 8	1 _____	__	
225	5	32	1 2 3 4 5 6 7 8	1 _____	__	
226	5	33	1 2 3 4 5 6 7 8	1 _____	__	
227	5	34	1 2 3 4 5 6 7 8	1 _____	__	
228	5	35	1 2 3 4 5 6 7 8	1 _____	__	
229	5	36	1 2 3 4 5 6 7 8	1 _____	__	
230	5	37	1 2 3 4 5 6 7 8	1 _____	__	
231	5	38	1 2 3 4 5 6 7 8	1 _____	__	
232	5	39	1 2 3 4 5 6 7 8	1 _____	__	
233	5	40	1 2 3 4 5 6 7 8	1 _____	__	

PROGRAMMING NODE INFORMATION FOR OUTPUTS 1 - 48						
LOC	PAGE	OUTPUT	Segment #1 Physical address	Segment #2 Output number	Segment #3 Error code	Notes
234	5	41	1 2 3 4 5 6 7 8	1 _ _ _ _ _	_	
235	5	42	1 2 3 4 5 6 7 8	1 _ _ _ _ _	_	
236	5	43	1 2 3 4 5 6 7 8	1 _ _ _ _ _	_	
237	5	44	1 2 3 4 5 6 7 8	1 _ _ _ _ _	_	
238	5	45	1 2 3 4 5 6 7 8	1 _ _ _ _ _	_	
239	5	46	1 2 3 4 5 6 7 8	1 _ _ _ _ _	_	
240	5	47	1 2 3 4 5 6 7 8	1 _ _ _ _ _	_	
241	5	48	1 2 3 4 5 6 7 8	1 _ _ _ _ _	_	

**USE THE FOLLOWING TABLE FOR  
EVEN NUMBERED LOCATIONS 242 – 336  
(EVENT / TIME)**

#	Event	#	Event
0	Always On	17	Alarm Memory
1	AC Fail (control or exp.) does not follow AC Fail delay time	18	Entry
2	Low Battery (control or exp.)	19	Exit
3	Dynamic Battery Test Time	20	Entry or Exit
4	Listen In	21	Armed
5	Line Seizure	22	Disarmed
6	Telephone Line Fault	23	Ready to Arm
7	Program Mode	24	Not Ready to Arm
8	Over-current (control or exp.)	25	Fire
9	Box Tamper (control or exp.)	26	Fire Trouble
10	Siren Tamper (control or exp.)	27	Chime
11	Smoke Power Reset	28	Beeping Keypad
12	Yelping Siren	29	Aux 1 Keypad Function
13	Steady Siren	30	Aux 2 Keypad Function
14	Any Siren	31	Panic Keypad Function
15	Steady Siren (temporal)	32	Code Entry ( locs 338 - 481)
16	Any Siren (temporal)		

**USE THE FOLLOWING TABLE FOR  
ODD NUMBERED LOCATIONS 243 – 337  
(SPECIAL FEATURES)**

SEG 1	DESCRIPTION	SEG 2	DESCRIPTION
1 =	ON times in minutes OFF if times in seconds	1 =	On if event activates output in Partition 1
2 =	ON to latch until a code is entered; OFF for timed	2 =	On if event activates output in Partition 2
3 =	ON if output should stop time when a code is entered	3 =	On if event activates output in Partition 3
4 =	ON for inverted output	4 =	On if event activates output in Partition 4
5 =	ON disables output during listen-in (only events 12-16)	5 =	On if event activates output in Partition 5
6 =	Reserved	6 =	On if event activates output in Partition 6
7 =	Reserved	7 =	On if event activates output in Partition 7
8 =	Reserved	8 =	On if event activates output in Partition 8

LOC	PAGE	DESCRIPTION	SEG 1 DEFAULT	SEG 1 DATA	SEG 2 DEFAULT	SEG 2 DATA
242	6	EVENT / TIME – OUTPUT 1	14=Any Siren		0=Follow Evt	
243	6	FEATURES – OUTPUT 1	-----		1 2 3 4 5 6 7 8	
244	6	EVENT / TIME – OUTPUT 2	14=Any Siren		0=Follow Evt	
245	6	FEATURES – OUTPUT 2	-----		1 2 3 4 5 6 7 8	
246	6	EVENT / TIME – OUTPUT 3	14=Any Siren		0=Follow Evt	
247	6	FEATURES – OUTPUT 3	-----		1 2 3 4 5 6 7 8	
248	6	EVENT / TIME – OUTPUT 4	14=Any Siren		0=Follow Evt	
249	6	FEATURES – OUTPUT 4	-----		1 2 3 4 5 6 7 8	
250	6	EVENT / TIME – OUTPUT 5	14=Any Siren		0=Follow Evt	
251	6	FEATURES – OUTPUT 5	-----		1 2 3 4 5 6 7 8	
252	6	EVENT / TIME – OUTPUT 6	14=Any Siren		0=Follow Evt	
253	6	FEATURES – OUTPUT 6	-----		1 2 3 4 5 6 7 8	
254	6	EVENT / TIME – OUTPUT 7	14=Any Siren		0=Follow Evt	
255	6	FEATURES – OUTPUT 7	-----		1 2 3 4 5 6 7 8	
256	6	EVENT / TIME – OUTPUT 8	14=Any Siren		0=Follow Evt	
257	6	FEATURES – OUTPUT 8	-----		1 2 3 4 5 6 7 8	
258	6	EVENT / TIME – OUTPUT 9	14=Any Siren		0=Follow Evt	
259	6	FEATURES – OUTPUT 9	-----		1 2 3 4 5 6 7 8	
260	6	EVENT / TIME – OUTPUT 10	14=Any Siren		0=Follow Evt	
261	6	FEATURES – OUTPUT 10	-----		1 2 3 4 5 6 7 8	
262	6	EVENT / TIME – OUTPUT 11	14=Any Siren		0=Follow Evt	
263	6	FEATURES – OUTPUT 11	-----		1 2 3 4 5 6 7 8	
264	6	EVENT / TIME – OUTPUT 12	14=Any Siren		0=Follow Evt	
265	6	FEATURES – OUTPUT 12	-----		1 2 3 4 5 6 7 8	
266	6	EVENT / TIME – OUTPUT 13	14=Any Siren		0=Follow Evt	
267	6	FEATURES – OUTPUT 13	-----		1 2 3 4 5 6 7 8	
268	6	EVENT / TIME – OUTPUT 14	14=Any Siren		0=Follow Evt	
269	6	FEATURES – OUTPUT 14	-----		1 2 3 4 5 6 7 8	
270	6	EVENT / TIME – OUTPUT 15	14=Any Siren		0=Follow Evt	
271	6	FEATURES – OUTPUT 15	-----		1 2 3 4 5 6 7 8	
272	6	EVENT / TIME – OUTPUT 16	14=Any Siren		0=Follow Evt	
273	6	FEATURES – OUTPUT 16	-----		1 2 3 4 5 6 7 8	

LOC	PAGE	DESCRIPTION	SEG 1 DEFAULT	SEG 1 DATA	SEG 2 DEFAULT	SEG 2 DATA
274	6	EVENT / TIME – OUTPUT 17	14=Any Siren		0=Follow Evt	
275	6	FEATURES – OUTPUT 17	-----		1 2 3 4 5 6 7 8	
276	6	EVENT / TIME – OUTPUT 18	14=Any Siren		0=Follow Evt	
277	6	FEATURES – OUTPUT 18	-----		1 2 3 4 5 6 7 8	
278	6	EVENT / TIME – OUTPUT 19	14=Any Siren		0=Follow Evt	
279	6	FEATURES – OUTPUT 19	-----		1 2 3 4 5 6 7 8	
280	6	EVENT / TIME – OUTPUT 20	14=Any Siren		0=Follow Evt	
281	6	FEATURES – OUTPUT 20	-----		1 2 3 4 5 6 7 8	
282	6	EVENT / TIME – OUTPUT 21	14=Any Siren		0=Follow Evt	
283	6	FEATURES – OUTPUT 21	-----		1 2 3 4 5 6 7 8	
284	6	EVENT / TIME – OUTPUT 22	14=Any Siren		0=Follow Evt	
285	6	FEATURES – OUTPUT 22	-----		1 2 3 4 5 6 7 8	
286	6	EVENT / TIME – OUTPUT 23	14=Any Siren		0=Follow Evt	
287	6	FEATURES – OUTPUT 23	-----		1 2 3 4 5 6 7 8	
288	6	EVENT / TIME – OUTPUT 24	14=Any Siren		0=Follow Evt	
289	6	FEATURES – OUTPUT 24	-----		1 2 3 4 5 6 7 8	
290	6	EVENT / TIME – OUTPUT 25	14=Any Siren		0=Follow Evt	
291	6	FEATURES – OUTPUT 25	-----		1 2 3 4 5 6 7 8	
292	6	EVENT / TIME – OUTPUT 26	14=Any Siren		0=Follow Evt	
293	6	FEATURES – OUTPUT 26	-----		1 2 3 4 5 6 7 8	
294	6	EVENT / TIME – OUTPUT 27	14=Any Siren		0=Follow Evt	
295	6	FEATURES – OUTPUT 27	-----		1 2 3 4 5 6 7 8	
296	6	EVENT / TIME – OUTPUT 28	14=Any Siren		0=Follow Evt	
297	6	FEATURES – OUTPUT 28	-----		1 2 3 4 5 6 7 8	
298	6	EVENT / TIME – OUTPUT 29	14=Any Siren		0=Follow Evt	
299	6	FEATURES – OUTPUT 29	-----		1 2 3 4 5 6 7 8	
300	6	EVENT / TIME – OUTPUT 30	14=Any Siren		0=Follow Evt	
301	6	FEATURES – OUTPUT 30	-----		1 2 3 4 5 6 7 8	
302	6	EVENT / TIME – OUTPUT 31	14=Any Siren		0=Follow Evt	
303	6	FEATURES – OUTPUT 31	-----		1 2 3 4 5 6 7 8	
304	6	EVENT / TIME – OUTPUT 32	14=Any Siren		0=Follow Evt	
305	6	FEATURES – OUTPUT 32	-----		1 2 3 4 5 6 7 8	
306	6	EVENT / TIME – OUTPUT 33	14=Any Siren		0=Follow Evt	
307	6	FEATURES – OUTPUT 33	-----		1 2 3 4 5 6 7 8	
308	6	EVENT / TIME – OUTPUT 34	14=Any Siren		0=Follow Evt	
309	6	FEATURES – OUTPUT 34	-----		1 2 3 4 5 6 7 8	
310	6	EVENT / TIME – OUTPUT 35	14=Any Siren		0=Follow Evt	
311	6	FEATURES – OUTPUT 35	-----		1 2 3 4 5 6 7 8	
312	6	EVENT / TIME – OUTPUT 36	14=Any Siren		0=Follow Evt	
313	6	FEATURES – OUTPUT 36	-----		1 2 3 4 5 6 7 8	
314	6	EVENT / TIME – OUTPUT 37	14=Any Siren		0=Follow Evt	
315	6	FEATURES – OUTPUT 37	-----		1 2 3 4 5 6 7 8	
316	6	EVENT / TIME – OUTPUT 38	14=Any Siren		0=Follow Evt	
317	6	FEATURES – OUTPUT 38	-----		1 2 3 4 5 6 7 8	
318	6	EVENT / TIME – OUTPUT 39	14=Any Siren		0=Follow Evt	
319	6	FEATURES – OUTPUT 39	-----		1 2 3 4 5 6 7 8	
320	6	EVENT / TIME – OUTPUT 40	14=Any Siren		0=Follow Evt	
321	6	FEATURES – OUTPUT 40	-----		1 2 3 4 5 6 7 8	
322	6	EVENT / TIME – OUTPUT 41	14=Any Siren		0=Follow Evt	
323	6	FEATURES – OUTPUT 41	-----		1 2 3 4 5 6 7 8	
324	6	EVENT / TIME – OUTPUT 42	14=Any Siren		0=Follow Evt	
325	6	FEATURES – OUTPUT 42	-----		1 2 3 4 5 6 7 8	
326	6	EVENT / TIME – OUTPUT 43	14=Any Siren		0=Follow Evt	
327	6	FEATURES – OUTPUT 43	-----		1 2 3 4 5 6 7 8	
328	6	EVENT / TIME – OUTPUT 44	14=Any Siren		0=Follow Evt	
329	6	FEATURES – OUTPUT 44	-----		1 2 3 4 5 6 7 8	
330	6	EVENT / TIME – OUTPUT 45	14=Any Siren		0=Follow Evt	
331	6	FEATURES – OUTPUT 45	-----		1 2 3 4 5 6 7 8	
332	6	EVENT / TIME – OUTPUT 46	14=Any Siren		0=Follow Evt	
333	6	FEATURES – OUTPUT 46	-----		1 2 3 4 5 6 7 8	
334	6	EVENT / TIME – OUTPUT 47	14=Any Siren		0=Follow Evt	
335	6	FEATURES – OUTPUT 47	-----		1 2 3 4 5 6 7 8	

LOC	PAGE	DESCRIPTION	SEG 1 DEFAULT	SEG 1 DATA	SEG 2 DEFAULT	SEG 2 DATA
336	6	EVENT / TIME – OUTPUT 48	14=Any Siren		0=Follow Evt	
337	6	FEATURES – OUTPUT 48	-----		1 2 3 4 5 6 7 8	

LOC	PAGE	DESCRIPTION										
338	7	CODES 1-10 OUTPUT SELECTION (Circle the numbers to disable)										
		User	1	2	3	4	5	6	7	8	9	10
		Output 1	1	1	1	1	1	1	1	1	1	1
		Output 2	2	2	2	2	2	2	2	2	2	2
		Output 3	3	3	3	3	3	3	3	3	3	3
		Output 4	4	4	4	4	4	4	4	4	4	4
		Output 5	5	5	5	5	5	5	5	5	5	5
		Output 6	6	6	6	6	6	6	6	6	6	6
		Output 7	7	7	7	7	7	7	7	7	7	7
Output 8	8	8	8	8	8	8	8	8	8	8		
339	7	CODES 11-20 OUTPUT SELECTION (Circle the numbers to disable)										
		User	11	12	13	14	15	16	17	18	19	20
		Output 1	1	1	1	1	1	1	1	1	1	1
		Output 2	2	2	2	2	2	2	2	2	2	2
		Output 3	3	3	3	3	3	3	3	3	3	3
		Output 4	4	4	4	4	4	4	4	4	4	4
		Output 5	5	5	5	5	5	5	5	5	5	5
		Output 6	6	6	6	6	6	6	6	6	6	6
		Output 7	7	7	7	7	7	7	7	7	7	7
Output 8	8	8	8	8	8	8	8	8	8	8		
340	7	CODES 21-30 OUTPUT SELECTION (Circle the numbers to disable)										
		User	21	22	23	24	25	26	27	28	29	30
		Output 1	1	1	1	1	1	1	1	1	1	1
		Output 2	2	2	2	2	2	2	2	2	2	2
		Output 3	3	3	3	3	3	3	3	3	3	3
		Output 4	4	4	4	4	4	4	4	4	4	4
		Output 5	5	5	5	5	5	5	5	5	5	5
		Output 6	6	6	6	6	6	6	6	6	6	6
		Output 7	7	7	7	7	7	7	7	7	7	7
Output 8	8	8	8	8	8	8	8	8	8	8		
341	7	CODES 31-40 OUTPUT SELECTION (Circle the numbers to program)										
		User	31	32	33	34	35	36	37	38	39	40
		Output 1	1	1	1	1	1	1	1	1	1	1
		Output 2	2	2	2	2	2	2	2	2	2	2
		Output 3	3	3	3	3	3	3	3	3	3	3
		Output 4	4	4	4	4	4	4	4	4	4	4
		Output 5	5	5	5	5	5	5	5	5	5	5
		Output 6	6	6	6	6	6	6	6	6	6	6
		Output 7	7	7	7	7	7	7	7	7	7	7
Output 8	8	8	8	8	8	8	8	8	8	8		
342	7	CODES 41-50 OUTPUT SELECTION (Circle the numbers to disable)										
		User	41	42	43	44	45	46	47	48	49	50
		Output 1	1	1	1	1	1	1	1	1	1	1
		Output 2	2	2	2	2	2	2	2	2	2	2
		Output 3	3	3	3	3	3	3	3	3	3	3
		Output 4	4	4	4	4	4	4	4	4	4	4
		Output 5	5	5	5	5	5	5	5	5	5	5
		Output 6	6	6	6	6	6	6	6	6	6	6
		Output 7	7	7	7	7	7	7	7	7	7	7
Output 8	8	8	8	8	8	8	8	8	8	8		
343	7	CODES 51-60 OUTPUT SELECTION (Circle the numbers to disable)										
		User	51	52	53	54	55	56	57	58	59	60
		Output 1	1	1	1	1	1	1	1	1	1	1
		Output 2	2	2	2	2	2	2	2	2	2	2
		Output 3	3	3	3	3	3	3	3	3	3	3
		Output 4	4	4	4	4	4	4	4	4	4	4
		Output 5	5	5	5	5	5	5	5	5	5	5
		Output 6	6	6	6	6	6	6	6	6	6	6
		Output 7	7	7	7	7	7	7	7	7	7	7
Output 8	8	8	8	8	8	8	8	8	8	8		



LOC	PAGE	DESCRIPTION										
344	7	CODES 61-70 OUTPUT SELECTION (Circle the numbers to disable)										
		User	61	62	63	64	65	66	67	68	69	70
		Output 1	1	1	1	1	1	1	1	1	1	1
		Output 2	2	2	2	2	2	2	2	2	2	2
		Output 3	3	3	3	3	3	3	3	3	3	3
		Output 4	4	4	4	4	4	4	4	4	4	4
		Output 5	5	5	5	5	5	5	5	5	5	5
		Output 6	6	6	6	6	6	6	6	6	6	6
		Output 7	7	7	7	7	7	7	7	7	7	7
		Output 8	8	8	8	8	8	8	8	8	8	8
345	7	CODES 71-80 OUTPUT SELECTION (Circle the numbers to disable)										
		User	71	72	73	74	75	76	77	78	79	80
		Output 1	1	1	1	1	1	1	1	1	1	1
		Output 2	2	2	2	2	2	2	2	2	2	2
		Output 3	3	3	3	3	3	3	3	3	3	3
		Output 4	4	4	4	4	4	4	4	4	4	4
		Output 5	5	5	5	5	5	5	5	5	5	5
		Output 6	6	6	6	6	6	6	6	6	6	6
		Output 7	7	7	7	7	7	7	7	7	7	7
		Output 8	8	8	8	8	8	8	8	8	8	8
346	7	CODES 81-90 OUTPUT SELECTION (Circle the numbers to disable)										
		User	81	82	83	84	85	86	87	88	89	90
		Output 1	1	1	1	1	1	1	1	1	1	1
		Output 2	2	2	2	2	2	2	2	2	2	2
		Output 3	3	3	3	3	3	3	3	3	3	3
		Output 4	4	4	4	4	4	4	4	4	4	4
		Output 5	5	5	5	5	5	5	5	5	5	5
		Output 6	6	6	6	6	6	6	6	6	6	6
		Output 7	7	7	7	7	7	7	7	7	7	7
		Output 8	8	8	8	8	8	8	8	8	8	8
347	7	CODES 91-100 OUTPUT SELECTION (Circle the numbers to disable)										
		User	91	92	93	94	95	96	97	98	99	100
		Output 1	1	1	1	1	1	1	1	1	1	1
		Output 2	2	2	2	2	2	2	2	2	2	2
		Output 3	3	3	3	3	3	3	3	3	3	3
		Output 4	4	4	4	4	4	4	4	4	4	4
		Output 5	5	5	5	5	5	5	5	5	5	5
		Output 6	6	6	6	6	6	6	6	6	6	6
		Output 7	7	7	7	7	7	7	7	7	7	7
		Output 8	8	8	8	8	8	8	8	8	8	8
348	7	CODES 101-110 OUTPUT SELECTION (Circle the numbers to disable)										
		User	101	102	103	104	105	106	107	108	109	110
		Output 1	1	1	1	1	1	1	1	1	1	1
		Output 2	2	2	2	2	2	2	2	2	2	2
		Output 3	3	3	3	3	3	3	3	3	3	3
		Output 4	4	4	4	4	4	4	4	4	4	4
		Output 5	5	5	5	5	5	5	5	5	5	5
		Output 6	6	6	6	6	6	6	6	6	6	6
		Output 7	7	7	7	7	7	7	7	7	7	7
		Output 8	8	8	8	8	8	8	8	8	8	8
349	7	CODES 111-120 OUTPUT SELECTION (Circle the numbers to disable)										
		User	111	112	113	114	115	116	117	118	119	120
		Output 1	1	1	1	1	1	1	1	1	1	1
		Output 2	2	2	2	2	2	2	2	2	2	2
		Output 3	3	3	3	3	3	3	3	3	3	3
		Output 4	4	4	4	4	4	4	4	4	4	4
		Output 5	5	5	5	5	5	5	5	5	5	5
		Output 6	6	6	6	6	6	6	6	6	6	6
		Output 7	7	7	7	7	7	7	7	7	7	7
		Output 8	8	8	8	8	8	8	8	8	8	8

LOC	PAGE	DESCRIPTION										
350	7	CODES 121-130 OUTPUT SELECTION (Circle the numbers to disable)										
		User	121	122	123	124	125	126	127	128	129	130
		Output 1	1	1	1	1	1	1	1	1	1	1
		Output 2	2	2	2	2	2	2	2	2	2	2
		Output 3	3	3	3	3	3	3	3	3	3	3
		Output 4	4	4	4	4	4	4	4	4	4	4
		Output 5	5	5	5	5	5	5	5	5	5	5
		Output 6	6	6	6	6	6	6	6	6	6	6
		Output 7	7	7	7	7	7	7	7	7	7	7
		Output 8	8	8	8	8	8	8	8	8	8	8
351	7	CODES 131-140 OUTPUT SELECTION (Circle the numbers to disable)										
		User	131	132	133	134	135	136	137	138	139	140
		Output 1	1	1	1	1	1	1	1	1	1	1
		Output 2	2	2	2	2	2	2	2	2	2	2
		Output 3	3	3	3	3	3	3	3	3	3	3
		Output 4	4	4	4	4	4	4	4	4	4	4
		Output 5	5	5	5	5	5	5	5	5	5	5
		Output 6	6	6	6	6	6	6	6	6	6	6
		Output 7	7	7	7	7	7	7	7	7	7	7
		Output 8	8	8	8	8	8	8	8	8	8	8
352	7	CODES 141-150 OUTPUT SELECTION (Circle the numbers to disable)										
		User	141	142	143	144	145	146	147	148	149	150
		Output 1	1	1	1	1	1	1	1	1	1	1
		Output 2	2	2	2	2	2	2	2	2	2	2
		Output 3	3	3	3	3	3	3	3	3	3	3
		Output 4	4	4	4	4	4	4	4	4	4	4
		Output 5	5	5	5	5	5	5	5	5	5	5
		Output 6	6	6	6	6	6	6	6	6	6	6
		Output 7	7	7	7	7	7	7	7	7	7	7
		Output 8	8	8	8	8	8	8	8	8	8	8
353	7	CODES 151-160 OUTPUT SELECTION (Circle the numbers to disable)										
		User	151	152	153	154	155	156	157	158	159	160
		Output 1	1	1	1	1	1	1	1	1	1	1
		Output 2	2	2	2	2	2	2	2	2	2	2
		Output 3	3	3	3	3	3	3	3	3	3	3
		Output 4	4	4	4	4	4	4	4	4	4	4
		Output 5	5	5	5	5	5	5	5	5	5	5
		Output 6	6	6	6	6	6	6	6	6	6	6
		Output 7	7	7	7	7	7	7	7	7	7	7
		Output 8	8	8	8	8	8	8	8	8	8	8
354	7	CODES 161-170 OUTPUT SELECTION (Circle the numbers to disable)										
		User	161	162	163	164	165	166	167	168	169	170
		Output 1	1	1	1	1	1	1	1	1	1	1
		Output 2	2	2	2	2	2	2	2	2	2	2
		Output 3	3	3	3	3	3	3	3	3	3	3
		Output 4	4	4	4	4	4	4	4	4	4	4
		Output 5	5	5	5	5	5	5	5	5	5	5
		Output 6	6	6	6	6	6	6	6	6	6	6
		Output 7	7	7	7	7	7	7	7	7	7	7
		Output 8	8	8	8	8	8	8	8	8	8	8
355	7	CODES 171-180 OUTPUT SELECTION (Circle the numbers to disable)										
		User	171	172	173	174	175	176	177	178	179	180
		Output 1	1	1	1	1	1	1	1	1	1	1
		Output 2	2	2	2	2	2	2	2	2	2	2
		Output 3	3	3	3	3	3	3	3	3	3	3
		Output 4	4	4	4	4	4	4	4	4	4	4
		Output 5	5	5	5	5	5	5	5	5	5	5
		Output 6	6	6	6	6	6	6	6	6	6	6
		Output 7	7	7	7	7	7	7	7	7	7	7
		Output 8	8	8	8	8	8	8	8	8	8	8

LOC	PAGE	DESCRIPTION										
356	7	CODES 181-190 OUTPUT SELECTION (Circle the numbers to disable)										
		User	181	182	183	184	185	186	187	188	189	190
		Output 1	1	1	1	1	1	1	1	1	1	1
		Output 2	2	2	2	2	2	2	2	2	2	2
		Output 3	3	3	3	3	3	3	3	3	3	3
		Output 4	4	4	4	4	4	4	4	4	4	4
		Output 5	5	5	5	5	5	5	5	5	5	5
		Output 6	6	6	6	6	6	6	6	6	6	6
		Output 7	7	7	7	7	7	7	7	7	7	7
		Output 8	8	8	8	8	8	8	8	8	8	8
357	7	CODES 191-200 OUTPUT SELECTION (Circle the numbers to disable)										
		User	191	192	193	194	195	196	197	198	199	200
		Output 1	1	1	1	1	1	1	1	1	1	1
		Output 2	2	2	2	2	2	2	2	2	2	2
		Output 3	3	3	3	3	3	3	3	3	3	3
		Output 4	4	4	4	4	4	4	4	4	4	4
		Output 5	5	5	5	5	5	5	5	5	5	5
		Output 6	6	6	6	6	6	6	6	6	6	6
		Output 7	7	7	7	7	7	7	7	7	7	7
		Output 8	8	8	8	8	8	8	8	8	8	8
358	7	CODES 201-210 OUTPUT SELECTION (Circle the numbers to disable)										
		User	201	202	203	204	205	206	207	208	209	210
		Output 1	1	1	1	1	1	1	1	1	1	1
		Output 2	2	2	2	2	2	2	2	2	2	2
		Output 3	3	3	3	3	3	3	3	3	3	3
		Output 4	4	4	4	4	4	4	4	4	4	4
		Output 5	5	5	5	5	5	5	5	5	5	5
		Output 6	6	6	6	6	6	6	6	6	6	6
		Output 7	7	7	7	7	7	7	7	7	7	7
		Output 8	8	8	8	8	8	8	8	8	8	8
359	7	CODES 211-220 OUTPUT SELECTION (Circle the numbers to disable)										
		User	211	212	213	214	215	216	217	218	219	220
		Output 1	1	1	1	1	1	1	1	1	1	1
		Output 2	2	2	2	2	2	2	2	2	2	2
		Output 3	3	3	3	3	3	3	3	3	3	3
		Output 4	4	4	4	4	4	4	4	4	4	4
		Output 5	5	5	5	5	5	5	5	5	5	5
		Output 6	6	6	6	6	6	6	6	6	6	6
		Output 7	7	7	7	7	7	7	7	7	7	7
		Output 8	8	8	8	8	8	8	8	8	8	8
360	7	CODES 221-230 OUTPUT SELECTION (Circle the numbers to disable)										
		User	221	222	223	224	225	226	227	228	229	230
		Output 1	1	1	1	1	1	1	1	1	1	1
		Output 2	2	2	2	2	2	2	2	2	2	2
		Output 3	3	3	3	3	3	3	3	3	3	3
		Output 4	4	4	4	4	4	4	4	4	4	4
		Output 5	5	5	5	5	5	5	5	5	5	5
		Output 6	6	6	6	6	6	6	6	6	6	6
		Output 7	7	7	7	7	7	7	7	7	7	7
		Output 8	8	8	8	8	8	8	8	8	8	8
361	7	CODES 231-240 OUTPUT SELECTION (Circle the numbers to disable)										
		User	231	232	233	234	235	236	237	238	239	240
		Output 1	1	1	1	1	1	1	1	1	1	1
		Output 2	2	2	2	2	2	2	2	2	2	2
		Output 3	3	3	3	3	3	3	3	3	3	3
		Output 4	4	4	4	4	4	4	4	4	4	4
		Output 5	5	5	5	5	5	5	5	5	5	5
		Output 6	6	6	6	6	6	6	6	6	6	6
		Output 7	7	7	7	7	7	7	7	7	7	7
		Output 8	8	8	8	8	8	8	8	8	8	8

LOC	PAGE	DESCRIPTION										
362	7	CODES 1-10 OUTPUT SELECTION (Circle the numbers to disable)										
		User	1	2	3	4	5	6	7	8	9	10
		Output 9	1	1	1	1	1	1	1	1	1	1
		Output 10	2	2	2	2	2	2	2	2	2	2
		Output 11	3	3	3	3	3	3	3	3	3	3
		Output 12	4	4	4	4	4	4	4	4	4	4
		Output 13	5	5	5	5	5	5	5	5	5	5
		Output 14	6	6	6	6	6	6	6	6	6	6
		Output 15	7	7	7	7	7	7	7	7	7	7
Output 16	8	8	8	8	8	8	8	8	8	8		
363	7	CODES 11-20 OUTPUT SELECTION (Circle the numbers to disable)										
		User	11	12	13	14	15	16	17	18	19	20
		Output 9	1	1	1	1	1	1	1	1	1	1
		Output 10	2	2	2	2	2	2	2	2	2	2
		Output 11	3	3	3	3	3	3	3	3	3	3
		Output 12	4	4	4	4	4	4	4	4	4	4
		Output 13	5	5	5	5	5	5	5	5	5	5
		Output 14	6	6	6	6	6	6	6	6	6	6
		Output 15	7	7	7	7	7	7	7	7	7	7
Output 16	8	8	8	8	8	8	8	8	8	8		
364	7	CODES 21-30 OUTPUT SELECTION (Circle the numbers to disable)										
		User	21	22	23	24	25	26	27	28	29	30
		Output 9	1	1	1	1	1	1	1	1	1	1
		Output 10	2	2	2	2	2	2	2	2	2	2
		Output 11	3	3	3	3	3	3	3	3	3	3
		Output 12	4	4	4	4	4	4	4	4	4	4
		Output 13	5	5	5	5	5	5	5	5	5	5
		Output 14	6	6	6	6	6	6	6	6	6	6
		Output 15	7	7	7	7	7	7	7	7	7	7
Output 16	8	8	8	8	8	8	8	8	8	8		
365	7	CODES 31-40 OUTPUT SELECTION (Circle the numbers to disable)										
		User	31	32	33	34	35	36	37	38	39	40
		Output 9	1	1	1	1	1	1	1	1	1	1
		Output 10	2	2	2	2	2	2	2	2	2	2
		Output 11	3	3	3	3	3	3	3	3	3	3
		Output 12	4	4	4	4	4	4	4	4	4	4
		Output 13	5	5	5	5	5	5	5	5	5	5
		Output 14	6	6	6	6	6	6	6	6	6	6
		Output 15	7	7	7	7	7	7	7	7	7	7
Output 16	8	8	8	8	8	8	8	8	8	8		
366	7	CODES 41-50 OUTPUT SELECTION (Circle the numbers to disable)										
		User	41	42	43	44	45	46	47	48	49	50
		Output 9	1	1	1	1	1	1	1	1	1	1
		Output 10	2	2	2	2	2	2	2	2	2	2
		Output 11	3	3	3	3	3	3	3	3	3	3
		Output 12	4	4	4	4	4	4	4	4	4	4
		Output 13	5	5	5	5	5	5	5	5	5	5
		Output 14	6	6	6	6	6	6	6	6	6	6
		Output 15	7	7	7	7	7	7	7	7	7	7
Output 16	8	8	8	8	8	8	8	8	8	8		
367	7	CODES 51-60 OUTPUT SELECTION (Circle the numbers to disable)										
		User	51	52	53	54	55	56	57	58	59	60
		Output 9	1	1	1	1	1	1	1	1	1	1
		Output 10	2	2	2	2	2	2	2	2	2	2
		Output 11	3	3	3	3	3	3	3	3	3	3
		Output 12	4	4	4	4	4	4	4	4	4	4
		Output 13	5	5	5	5	5	5	5	5	5	5
		Output 14	6	6	6	6	6	6	6	6	6	6
		Output 15	7	7	7	7	7	7	7	7	7	7
Output 16	8	8	8	8	8	8	8	8	8	8		

LOC	PAGE	DESCRIPTION										
368	7	CODES 61-70 OUTPUT SELECTION (Circle the numbers to disable)										
		User	61	62	63	64	65	66	67	68	69	70
		Output 9	1	1	1	1	1	1	1	1	1	1
		Output 10	2	2	2	2	2	2	2	2	2	2
		Output 11	3	3	3	3	3	3	3	3	3	3
		Output 12	4	4	4	4	4	4	4	4	4	4
		Output 13	5	5	5	5	5	5	5	5	5	5
		Output 14	6	6	6	6	6	6	6	6	6	6
		Output 15	7	7	7	7	7	7	7	7	7	7
Output 16	8	8	8	8	8	8	8	8	8	8		
369	7	CODES 71-80 OUTPUT SELECTION (Circle the numbers to disable)										
		User	71	72	73	74	75	76	77	78	79	80
		Output 9	1	1	1	1	1	1	1	1	1	1
		Output 10	2	2	2	2	2	2	2	2	2	2
		Output 11	3	3	3	3	3	3	3	3	3	3
		Output 12	4	4	4	4	4	4	4	4	4	4
		Output 13	5	5	5	5	5	5	5	5	5	5
		Output 14	6	6	6	6	6	6	6	6	6	6
		Output 15	7	7	7	7	7	7	7	7	7	7
Output 16	8	8	8	8	8	8	8	8	8	8		
370	7	CODES 81-90 OUTPUT SELECTION (Circle the numbers to disable)										
		User	81	82	83	84	85	86	87	88	89	90
		Output 9	1	1	1	1	1	1	1	1	1	1
		Output 10	2	2	2	2	2	2	2	2	2	2
		Output 11	3	3	3	3	3	3	3	3	3	3
		Output 12	4	4	4	4	4	4	4	4	4	4
		Output 13	5	5	5	5	5	5	5	5	5	5
		Output 14	6	6	6	6	6	6	6	6	6	6
		Output 15	7	7	7	7	7	7	7	7	7	7
Output 16	8	8	8	8	8	8	8	8	8	8		
371	7	CODES 91-100 OUTPUT SELECTION (Circle the numbers to disable)										
		User	91	92	93	94	95	96	97	98	99	100
		Output 9	1	1	1	1	1	1	1	1	1	1
		Output 10	2	2	2	2	2	2	2	2	2	2
		Output 11	3	3	3	3	3	3	3	3	3	3
		Output 12	4	4	4	4	4	4	4	4	4	4
		Output 13	5	5	5	5	5	5	5	5	5	5
		Output 14	6	6	6	6	6	6	6	6	6	6
		Output 15	7	7	7	7	7	7	7	7	7	7
Output 16	8	8	8	8	8	8	8	8	8	8		
372	7	CODES 101-110 OUTPUT SELECTION (Circle the numbers to disable)										
		User	101	102	103	104	105	106	107	108	109	110
		Output 9	1	1	1	1	1	1	1	1	1	1
		Output 10	2	2	2	2	2	2	2	2	2	2
		Output 11	3	3	3	3	3	3	3	3	3	3
		Output 12	4	4	4	4	4	4	4	4	4	4
		Output 13	5	5	5	5	5	5	5	5	5	5
		Output 14	6	6	6	6	6	6	6	6	6	6
		Output 15	7	7	7	7	7	7	7	7	7	7
Output 16	8	8	8	8	8	8	8	8	8	8		
373	7	CODES 111-120 OUTPUT SELECTION (Circle the numbers to disable)										
		User	111	112	113	114	115	116	117	118	119	120
		Output 9	1	1	1	1	1	1	1	1	1	1
		Output 10	2	2	2	2	2	2	2	2	2	2
		Output 11	3	3	3	3	3	3	3	3	3	3
		Output 12	4	4	4	4	4	4	4	4	4	4
		Output 13	5	5	5	5	5	5	5	5	5	5
		Output 14	6	6	6	6	6	6	6	6	6	6
		Output 15	7	7	7	7	7	7	7	7	7	7
Output 16	8	8	8	8	8	8	8	8	8	8		

LOC	PAGE	DESCRIPTION										
374	7	CODES 121-130 OUTPUT SELECTION (Circle the numbers to disable)										
		User	121	122	123	124	125	126	127	128	129	130
		Output 9	1	1	1	1	1	1	1	1	1	1
		Output 10	2	2	2	2	2	2	2	2	2	2
		Output 11	3	3	3	3	3	3	3	3	3	3
		Output 12	4	4	4	4	4	4	4	4	4	4
		Output 13	5	5	5	5	5	5	5	5	5	5
		Output 14	6	6	6	6	6	6	6	6	6	6
		Output 15	7	7	7	7	7	7	7	7	7	7
Output 16	8	8	8	8	8	8	8	8	8	8		
375	7	CODES 131-140 OUTPUT SELECTION (Circle the numbers to disable)										
		User	131	132	133	134	135	136	137	138	139	140
		Output 9	1	1	1	1	1	1	1	1	1	1
		Output 10	2	2	2	2	2	2	2	2	2	2
		Output 11	3	3	3	3	3	3	3	3	3	3
		Output 12	4	4	4	4	4	4	4	4	4	4
		Output 13	5	5	5	5	5	5	5	5	5	5
		Output 14	6	6	6	6	6	6	6	6	6	6
		Output 15	7	7	7	7	7	7	7	7	7	7
Output 16	8	8	8	8	8	8	8	8	8	8		
376	7	CODES 141-150 OUTPUT SELECTION (Circle the numbers to disable)										
		User	141	142	143	144	145	146	147	148	149	150
		Output 9	1	1	1	1	1	1	1	1	1	1
		Output 10	2	2	2	2	2	2	2	2	2	2
		Output 11	3	3	3	3	3	3	3	3	3	3
		Output 12	4	4	4	4	4	4	4	4	4	4
		Output 13	5	5	5	5	5	5	5	5	5	5
		Output 14	6	6	6	6	6	6	6	6	6	6
		Output 15	7	7	7	7	7	7	7	7	7	7
Output 16	8	8	8	8	8	8	8	8	8	8		
377	7	CODES 151-160 OUTPUT SELECTION (Circle the numbers to disable)										
		User	151	152	153	154	155	156	157	158	159	160
		Output 9	1	1	1	1	1	1	1	1	1	1
		Output 10	2	2	2	2	2	2	2	2	2	2
		Output 11	3	3	3	3	3	3	3	3	3	3
		Output 12	4	4	4	4	4	4	4	4	4	4
		Output 13	5	5	5	5	5	5	5	5	5	5
		Output 14	6	6	6	6	6	6	6	6	6	6
		Output 15	7	7	7	7	7	7	7	7	7	7
Output 16	8	8	8	8	8	8	8	8	8	8		
378	7	CODES 161-170 OUTPUT SELECTION (Circle the numbers to disable)										
		User	161	162	163	164	165	166	167	168	169	170
		Output 9	1	1	1	1	1	1	1	1	1	1
		Output 10	2	2	2	2	2	2	2	2	2	2
		Output 11	3	3	3	3	3	3	3	3	3	3
		Output 12	4	4	4	4	4	4	4	4	4	4
		Output 13	5	5	5	5	5	5	5	5	5	5
		Output 14	6	6	6	6	6	6	6	6	6	6
		Output 15	7	7	7	7	7	7	7	7	7	7
Output 16	8	8	8	8	8	8	8	8	8	8		
379	7	CODES 171-180 OUTPUT SELECTION (Circle the numbers to disable)										
		User	171	172	173	174	175	176	177	178	179	180
		Output 9	1	1	1	1	1	1	1	1	1	1
		Output 10	2	2	2	2	2	2	2	2	2	2
		Output 11	3	3	3	3	3	3	3	3	3	3
		Output 12	4	4	4	4	4	4	4	4	4	4
		Output 13	5	5	5	5	5	5	5	5	5	5
		Output 14	6	6	6	6	6	6	6	6	6	6
		Output 15	7	7	7	7	7	7	7	7	7	7
Output 16	8	8	8	8	8	8	8	8	8	8		

LOC	PAGE	DESCRIPTION										
380	7	CODES 181-190 OUTPUT SELECTION (Circle the numbers to disable)										
		User	181	182	183	184	185	186	187	188	189	190
		Output 9	1	1	1	1	1	1	1	1	1	1
		Output 10	2	2	2	2	2	2	2	2	2	2
		Output 11	3	3	3	3	3	3	3	3	3	3
		Output 12	4	4	4	4	4	4	4	4	4	4
		Output 13	5	5	5	5	5	5	5	5	5	5
		Output 14	6	6	6	6	6	6	6	6	6	6
		Output 15	7	7	7	7	7	7	7	7	7	7
Output 16	8	8	8	8	8	8	8	8	8	8		
381	7	CODES 191-200 OUTPUT SELECTION (Circle the numbers to disable)										
		User	191	192	193	194	195	196	197	198	199	200
		Output 9	1	1	1	1	1	1	1	1	1	1
		Output 10	2	2	2	2	2	2	2	2	2	2
		Output 11	3	3	3	3	3	3	3	3	3	3
		Output 12	4	4	4	4	4	4	4	4	4	4
		Output 13	5	5	5	5	5	5	5	5	5	5
		Output 14	6	6	6	6	6	6	6	6	6	6
		Output 15	7	7	7	7	7	7	7	7	7	7
Output 16	8	8	8	8	8	8	8	8	8	8		
382	7	CODES 201-210 OUTPUT SELECTION (Circle the numbers to disable)										
		User	201	202	203	204	205	206	207	208	209	210
		Output 9	1	1	1	1	1	1	1	1	1	1
		Output 10	2	2	2	2	2	2	2	2	2	2
		Output 11	3	3	3	3	3	3	3	3	3	3
		Output 12	4	4	4	4	4	4	4	4	4	4
		Output 13	5	5	5	5	5	5	5	5	5	5
		Output 14	6	6	6	6	6	6	6	6	6	6
		Output 15	7	7	7	7	7	7	7	7	7	7
Output 16	8	8	8	8	8	8	8	8	8	8		
383	7	CODES 211-220 OUTPUT SELECTION (Circle the numbers to disable)										
		User	211	212	213	214	215	216	217	218	219	220
		Output 9	1	1	1	1	1	1	1	1	1	1
		Output 10	2	2	2	2	2	2	2	2	2	2
		Output 11	3	3	3	3	3	3	3	3	3	3
		Output 12	4	4	4	4	4	4	4	4	4	4
		Output 13	5	5	5	5	5	5	5	5	5	5
		Output 14	6	6	6	6	6	6	6	6	6	6
		Output 15	7	7	7	7	7	7	7	7	7	7
Output 16	8	8	8	8	8	8	8	8	8	8		
384	7	CODES 221-230 OUTPUT SELECTION (Circle the numbers to disable)										
		User	221	222	223	224	225	226	227	228	229	230
		Output 9	1	1	1	1	1	1	1	1	1	1
		Output 10	2	2	2	2	2	2	2	2	2	2
		Output 11	3	3	3	3	3	3	3	3	3	3
		Output 12	4	4	4	4	4	4	4	4	4	4
		Output 13	5	5	5	5	5	5	5	5	5	5
		Output 14	6	6	6	6	6	6	6	6	6	6
		Output 15	7	7	7	7	7	7	7	7	7	7
Output 16	8	8	8	8	8	8	8	8	8	8		
385	7	CODES 231-240 OUTPUT SELECTION (Circle the numbers to disable)										
		User	231	232	233	234	235	236	237	238	239	240
		Output 9	1	1	1	1	1	1	1	1	1	1
		Output 10	2	2	2	2	2	2	2	2	2	2
		Output 11	3	3	3	3	3	3	3	3	3	3
		Output 12	4	4	4	4	4	4	4	4	4	4
		Output 13	5	5	5	5	5	5	5	5	5	5
		Output 14	6	6	6	6	6	6	6	6	6	6
		Output 15	7	7	7	7	7	7	7	7	7	7
Output 16	8	8	8	8	8	8	8	8	8	8		

LOC	PAGE	DESCRIPTION										
386	7	CODES 1-10 OUTPUT SELECTION (Circle the numbers to disable)										
		User	1	2	3	4	5	6	7	8	9	10
		Output 17	1	1	1	1	1	1	1	1	1	1
		Output 18	2	2	2	2	2	2	2	2	2	2
		Output 19	3	3	3	3	3	3	3	3	3	3
		Output 20	4	4	4	4	4	4	4	4	4	4
		Output 21	5	5	5	5	5	5	5	5	5	5
		Output 22	6	6	6	6	6	6	6	6	6	6
		Output 23	7	7	7	7	7	7	7	7	7	7
Output 24	8	8	8	8	8	8	8	8	8	8		
387	7	CODES 11-20 OUTPUT SELECTION (Circle the numbers to disable)										
		User	11	12	13	14	15	16	17	18	19	20
		Output 17	1	1	1	1	1	1	1	1	1	1
		Output 18	2	2	2	2	2	2	2	2	2	2
		Output 19	3	3	3	3	3	3	3	3	3	3
		Output 20	4	4	4	4	4	4	4	4	4	4
		Output 21	5	5	5	5	5	5	5	5	5	5
		Output 22	6	6	6	6	6	6	6	6	6	6
		Output 23	7	7	7	7	7	7	7	7	7	7
Output 24	8	8	8	8	8	8	8	8	8	8		
388	7	CODES 21-30 OUTPUT SELECTION (Circle the numbers to disable)										
		User	21	22	23	24	25	26	27	28	29	30
		Output 17	1	1	1	1	1	1	1	1	1	1
		Output 18	2	2	2	2	2	2	2	2	2	2
		Output 19	3	3	3	3	3	3	3	3	3	3
		Output 20	4	4	4	4	4	4	4	4	4	4
		Output 21	5	5	5	5	5	5	5	5	5	5
		Output 22	6	6	6	6	6	6	6	6	6	6
		Output 23	7	7	7	7	7	7	7	7	7	7
Output 24	8	8	8	8	8	8	8	8	8	8		
389	7	CODES 31-40 OUTPUT SELECTION (Circle the numbers to disable)										
		User	31	32	33	34	35	36	37	38	39	40
		Output 17	1	1	1	1	1	1	1	1	1	1
		Output 18	2	2	2	2	2	2	2	2	2	2
		Output 19	3	3	3	3	3	3	3	3	3	3
		Output 20	4	4	4	4	4	4	4	4	4	4
		Output 21	5	5	5	5	5	5	5	5	5	5
		Output 22	6	6	6	6	6	6	6	6	6	6
		Output 23	7	7	7	7	7	7	7	7	7	7
Output 24	8	8	8	8	8	8	8	8	8	8		
390	7	CODES 41-50 OUTPUT SELECTION (Circle the numbers to disable)										
		User	41	42	43	44	45	46	47	48	49	50
		Output 17	1	1	1	1	1	1	1	1	1	1
		Output 18	2	2	2	2	2	2	2	2	2	2
		Output 19	3	3	3	3	3	3	3	3	3	3
		Output 20	4	4	4	4	4	4	4	4	4	4
		Output 21	5	5	5	5	5	5	5	5	5	5
		Output 22	6	6	6	6	6	6	6	6	6	6
		Output 23	7	7	7	7	7	7	7	7	7	7
Output 24	8	8	8	8	8	8	8	8	8	8		
391	7	CODES 51-60 OUTPUT SELECTION (Circle the numbers to disable)										
		User	51	52	53	54	55	56	57	58	59	60
		Output 17	1	1	1	1	1	1	1	1	1	1
		Output 18	2	2	2	2	2	2	2	2	2	2
		Output 19	3	3	3	3	3	3	3	3	3	3
		Output 20	4	4	4	4	4	4	4	4	4	4
		Output 21	5	5	5	5	5	5	5	5	5	5
		Output 22	6	6	6	6	6	6	6	6	6	6
		Output 23	7	7	7	7	7	7	7	7	7	7
Output 24	8	8	8	8	8	8	8	8	8	8		



LOC	PAGE	DESCRIPTION										
392	7	CODES 61-70 OUTPUT SELECTION (Circle the numbers to disable)										
		User	61	62	63	64	65	66	67	68	69	70
		Output 17	1	1	1	1	1	1	1	1	1	1
		Output 18	2	2	2	2	2	2	2	2	2	2
		Output 19	3	3	3	3	3	3	3	3	3	3
		Output 20	4	4	4	4	4	4	4	4	4	4
		Output 21	5	5	5	5	5	5	5	5	5	5
		Output 22	6	6	6	6	6	6	6	6	6	6
		Output 23	7	7	7	7	7	7	7	7	7	7
Output 24	8	8	8	8	8	8	8	8	8	8		
393	7	CODES 71-80 OUTPUT SELECTION (Circle the numbers to disable)										
		User	71	72	73	74	75	76	77	78	79	80
		Output 17	1	1	1	1	1	1	1	1	1	1
		Output 18	2	2	2	2	2	2	2	2	2	2
		Output 19	3	3	3	3	3	3	3	3	3	3
		Output 20	4	4	4	4	4	4	4	4	4	4
		Output 21	5	5	5	5	5	5	5	5	5	5
		Output 22	6	6	6	6	6	6	6	6	6	6
		Output 23	7	7	7	7	7	7	7	7	7	7
Output 24	8	8	8	8	8	8	8	8	8	8		
394	7	CODES 81-90 OUTPUT SELECTION (Circle the numbers to disable)										
		User	81	82	83	84	85	86	87	88	89	90
		Output 17	1	1	1	1	1	1	1	1	1	1
		Output 18	2	2	2	2	2	2	2	2	2	2
		Output 19	3	3	3	3	3	3	3	3	3	3
		Output 20	4	4	4	4	4	4	4	4	4	4
		Output 21	5	5	5	5	5	5	5	5	5	5
		Output 22	6	6	6	6	6	6	6	6	6	6
		Output 23	7	7	7	7	7	7	7	7	7	7
Output 24	8	8	8	8	8	8	8	8	8	8		
395	7	CODES 91-100 OUTPUT SELECTION (Circle the numbers to disable)										
		User	91	92	93	94	95	96	97	98	99	100
		Output 17	1	1	1	1	1	1	1	1	1	1
		Output 18	2	2	2	2	2	2	2	2	2	2
		Output 19	3	3	3	3	3	3	3	3	3	3
		Output 20	4	4	4	4	4	4	4	4	4	4
		Output 21	5	5	5	5	5	5	5	5	5	5
		Output 22	6	6	6	6	6	6	6	6	6	6
		Output 23	7	7	7	7	7	7	7	7	7	7
Output 24	8	8	8	8	8	8	8	8	8	8		
396	7	CODES 101-110 OUTPUT SELECTION (Circle the numbers to disable)										
		User	101	102	103	104	105	106	107	108	109	110
		Output 17	1	1	1	1	1	1	1	1	1	1
		Output 18	2	2	2	2	2	2	2	2	2	2
		Output 19	3	3	3	3	3	3	3	3	3	3
		Output 20	4	4	4	4	4	4	4	4	4	4
		Output 21	5	5	5	5	5	5	5	5	5	5
		Output 22	6	6	6	6	6	6	6	6	6	6
		Output 23	7	7	7	7	7	7	7	7	7	7
Output 24	8	8	8	8	8	8	8	8	8	8		
397	7	CODES 111-120 OUTPUT SELECTION (Circle the numbers to disable)										
		User	111	112	113	114	115	116	117	118	119	120
		Output 17	1	1	1	1	1	1	1	1	1	1
		Output 18	2	2	2	2	2	2	2	2	2	2
		Output 19	3	3	3	3	3	3	3	3	3	3
		Output 20	4	4	4	4	4	4	4	4	4	4
		Output 21	5	5	5	5	5	5	5	5	5	5
		Output 22	6	6	6	6	6	6	6	6	6	6
		Output 23	7	7	7	7	7	7	7	7	7	7
Output 24	8	8	8	8	8	8	8	8	8	8		

LOC	PAGE	DESCRIPTION										
398	7	CODES 121-130 OUTPUT SELECTION (Circle the numbers to disable)										
		User	121	122	123	124	125	126	127	128	129	130
		Output 17	1	1	1	1	1	1	1	1	1	1
		Output 18	2	2	2	2	2	2	2	2	2	2
		Output 19	3	3	3	3	3	3	3	3	3	3
		Output 20	4	4	4	4	4	4	4	4	4	4
		Output 21	5	5	5	5	5	5	5	5	5	5
		Output 22	6	6	6	6	6	6	6	6	6	6
		Output 23	7	7	7	7	7	7	7	7	7	7
Output 24	8	8	8	8	8	8	8	8	8	8		
399	7	CODES 131-140 OUTPUT SELECTION (Circle the numbers to disable)										
		User	131	132	133	134	135	136	137	138	139	140
		Output 17	1	1	1	1	1	1	1	1	1	1
		Output 18	2	2	2	2	2	2	2	2	2	2
		Output 19	3	3	3	3	3	3	3	3	3	3
		Output 20	4	4	4	4	4	4	4	4	4	4
		Output 21	5	5	5	5	5	5	5	5	5	5
		Output 22	6	6	6	6	6	6	6	6	6	6
		Output 23	7	7	7	7	7	7	7	7	7	7
Output 24	8	8	8	8	8	8	8	8	8	8		
400	7	CODES 141-150 OUTPUT SELECTION (Circle the numbers to disable)										
		User	141	142	143	144	145	146	147	148	149	150
		Output 17	1	1	1	1	1	1	1	1	1	1
		Output 18	2	2	2	2	2	2	2	2	2	2
		Output 19	3	3	3	3	3	3	3	3	3	3
		Output 20	4	4	4	4	4	4	4	4	4	4
		Output 21	5	5	5	5	5	5	5	5	5	5
		Output 22	6	6	6	6	6	6	6	6	6	6
		Output 23	7	7	7	7	7	7	7	7	7	7
Output 24	8	8	8	8	8	8	8	8	8	8		
401	7	CODES 151-160 OUTPUT SELECTION (Circle the numbers to disable)										
		User	151	152	153	154	155	156	157	158	159	160
		Output 17	1	1	1	1	1	1	1	1	1	1
		Output 18	2	2	2	2	2	2	2	2	2	2
		Output 19	3	3	3	3	3	3	3	3	3	3
		Output 20	4	4	4	4	4	4	4	4	4	4
		Output 21	5	5	5	5	5	5	5	5	5	5
		Output 22	6	6	6	6	6	6	6	6	6	6
		Output 23	7	7	7	7	7	7	7	7	7	7
Output 24	8	8	8	8	8	8	8	8	8	8		
402	7	CODES 161-170 OUTPUT SELECTION (Circle the numbers to disable)										
		User	161	162	163	164	165	166	167	168	169	170
		Output 17	1	1	1	1	1	1	1	1	1	1
		Output 18	2	2	2	2	2	2	2	2	2	2
		Output 19	3	3	3	3	3	3	3	3	3	3
		Output 20	4	4	4	4	4	4	4	4	4	4
		Output 21	5	5	5	5	5	5	5	5	5	5
		Output 22	6	6	6	6	6	6	6	6	6	6
		Output 23	7	7	7	7	7	7	7	7	7	7
Output 24	8	8	8	8	8	8	8	8	8	8		
403	7	CODES 171-180 OUTPUT SELECTION (Circle the numbers to disable)										
		User	171	172	173	174	175	176	177	178	179	180
		Output 17	1	1	1	1	1	1	1	1	1	1
		Output 18	2	2	2	2	2	2	2	2	2	2
		Output 19	3	3	3	3	3	3	3	3	3	3
		Output 20	4	4	4	4	4	4	4	4	4	4
		Output 21	5	5	5	5	5	5	5	5	5	5
		Output 22	6	6	6	6	6	6	6	6	6	6
		Output 23	7	7	7	7	7	7	7	7	7	7
Output 24	8	8	8	8	8	8	8	8	8	8		

LOC	PAGE	DESCRIPTION										
404	7	CODES 181-190 OUTPUT SELECTION (Circle the numbers to disable)										
		User	181	182	183	184	185	186	187	188	189	190
		Output 17	1	1	1	1	1	1	1	1	1	1
		Output 18	2	2	2	2	2	2	2	2	2	2
		Output 19	3	3	3	3	3	3	3	3	3	3
		Output 20	4	4	4	4	4	4	4	4	4	4
		Output 21	5	5	5	5	5	5	5	5	5	5
		Output 22	6	6	6	6	6	6	6	6	6	6
		Output 23	7	7	7	7	7	7	7	7	7	7
Output 24	8	8	8	8	8	8	8	8	8	8		
405	7	CODES 191-200 OUTPUT SELECTION (Circle the numbers to disable)										
		User	191	192	193	194	195	196	197	198	199	200
		Output 17	1	1	1	1	1	1	1	1	1	1
		Output 18	2	2	2	2	2	2	2	2	2	2
		Output 19	3	3	3	3	3	3	3	3	3	3
		Output 20	4	4	4	4	4	4	4	4	4	4
		Output 21	5	5	5	5	5	5	5	5	5	5
		Output 22	6	6	6	6	6	6	6	6	6	6
		Output 23	7	7	7	7	7	7	7	7	7	7
Output 24	8	8	8	8	8	8	8	8	8	8		
406	7	CODES 201-210 OUTPUT SELECTION (Circle the numbers to disable)										
		User	201	202	203	204	205	206	207	208	209	210
		Output 17	1	1	1	1	1	1	1	1	1	1
		Output 18	2	2	2	2	2	2	2	2	2	2
		Output 19	3	3	3	3	3	3	3	3	3	3
		Output 20	4	4	4	4	4	4	4	4	4	4
		Output 21	5	5	5	5	5	5	5	5	5	5
		Output 22	6	6	6	6	6	6	6	6	6	6
		Output 23	7	7	7	7	7	7	7	7	7	7
Output 24	8	8	8	8	8	8	8	8	8	8		
407	7	CODES 211-220 OUTPUT SELECTION (Circle the numbers to disable)										
		User	211	212	213	214	215	216	217	218	219	220
		Output 17	1	1	1	1	1	1	1	1	1	1
		Output 18	2	2	2	2	2	2	2	2	2	2
		Output 19	3	3	3	3	3	3	3	3	3	3
		Output 20	4	4	4	4	4	4	4	4	4	4
		Output 21	5	5	5	5	5	5	5	5	5	5
		Output 22	6	6	6	6	6	6	6	6	6	6
		Output 23	7	7	7	7	7	7	7	7	7	7
Output 24	8	8	8	8	8	8	8	8	8	8		
408	7	CODES 221-230 OUTPUT SELECTION (Circle the numbers to disable)										
		User	221	222	223	224	225	226	227	228	229	230
		Output 17	1	1	1	1	1	1	1	1	1	1
		Output 18	2	2	2	2	2	2	2	2	2	2
		Output 19	3	3	3	3	3	3	3	3	3	3
		Output 20	4	4	4	4	4	4	4	4	4	4
		Output 21	5	5	5	5	5	5	5	5	5	5
		Output 22	6	6	6	6	6	6	6	6	6	6
		Output 23	7	7	7	7	7	7	7	7	7	7
Output 24	8	8	8	8	8	8	8	8	8	8		
409	7	CODES 231-240 OUTPUT SELECTION (Circle the numbers to disable)										
		User	231	232	233	234	235	236	237	238	239	240
		Output 17	1	1	1	1	1	1	1	1	1	1
		Output 18	2	2	2	2	2	2	2	2	2	2
		Output 19	3	3	3	3	3	3	3	3	3	3
		Output 20	4	4	4	4	4	4	4	4	4	4
		Output 21	5	5	5	5	5	5	5	5	5	5
		Output 22	6	6	6	6	6	6	6	6	6	6
		Output 23	7	7	7	7	7	7	7	7	7	7
Output 24	8	8	8	8	8	8	8	8	8	8		

LOC	PAGE	DESCRIPTION										
410	7	CODES 1-10 OUTPUT SELECTION (Circle the numbers to disable)										
		User	1	2	3	4	5	6	7	8	9	10
		Output 25	1	1	1	1	1	1	1	1	1	1
		Output 26	2	2	2	2	2	2	2	2	2	2
		Output 27	3	3	3	3	3	3	3	3	3	3
		Output 28	4	4	4	4	4	4	4	4	4	4
		Output 29	5	5	5	5	5	5	5	5	5	5
		Output 30	6	6	6	6	6	6	6	6	6	6
		Output 31	7	7	7	7	7	7	7	7	7	7
		Output 32	8	8	8	8	8	8	8	8	8	8
411	7	CODES 11-20 OUTPUT SELECTION (Circle the numbers to disable)										
		User	11	12	13	14	15	16	17	18	19	20
		Output 25	1	1	1	1	1	1	1	1	1	1
		Output 26	2	2	2	2	2	2	2	2	2	2
		Output 27	3	3	3	3	3	3	3	3	3	3
		Output 28	4	4	4	4	4	4	4	4	4	4
		Output 29	5	5	5	5	5	5	5	5	5	5
		Output 30	6	6	6	6	6	6	6	6	6	6
		Output 31	7	7	7	7	7	7	7	7	7	7
		Output 32	8	8	8	8	8	8	8	8	8	8
412	7	CODES 21-30 OUTPUT SELECTION (Circle the numbers to disable)										
		User	21	22	23	24	25	26	27	28	29	30
		Output 25	1	1	1	1	1	1	1	1	1	1
		Output 26	2	2	2	2	2	2	2	2	2	2
		Output 27	3	3	3	3	3	3	3	3	3	3
		Output 28	4	4	4	4	4	4	4	4	4	4
		Output 29	5	5	5	5	5	5	5	5	5	5
		Output 30	6	6	6	6	6	6	6	6	6	6
		Output 31	7	7	7	7	7	7	7	7	7	7
		Output 32	8	8	8	8	8	8	8	8	8	8
413	7	CODES 31-40 OUTPUT SELECTION (Circle the numbers to disable)										
		User	31	32	33	34	35	36	37	38	39	40
		Output 25	1	1	1	1	1	1	1	1	1	1
		Output 26	2	2	2	2	2	2	2	2	2	2
		Output 27	3	3	3	3	3	3	3	3	3	3
		Output 28	4	4	4	4	4	4	4	4	4	4
		Output 29	5	5	5	5	5	5	5	5	5	5
		Output 30	6	6	6	6	6	6	6	6	6	6
		Output 31	7	7	7	7	7	7	7	7	7	7
		Output 32	8	8	8	8	8	8	8	8	8	8
414	7	CODES 41-50 OUTPUT SELECTION (Circle the numbers to disable)										
		User	41	42	43	44	45	46	47	48	49	50
		Output 25	1	1	1	1	1	1	1	1	1	1
		Output 26	2	2	2	2	2	2	2	2	2	2
		Output 27	3	3	3	3	3	3	3	3	3	3
		Output 28	4	4	4	4	4	4	4	4	4	4
		Output 29	5	5	5	5	5	5	5	5	5	5
		Output 30	6	6	6	6	6	6	6	6	6	6
		Output 31	7	7	7	7	7	7	7	7	7	7
		Output 32	8	8	8	8	8	8	8	8	8	8
415	7	CODES 51-60 OUTPUT SELECTION (Circle the numbers to disable)										
		User	51	52	53	54	55	56	57	58	59	60
		Output 25	1	1	1	1	1	1	1	1	1	1
		Output 26	2	2	2	2	2	2	2	2	2	2
		Output 27	3	3	3	3	3	3	3	3	3	3
		Output 28	4	4	4	4	4	4	4	4	4	4
		Output 29	5	5	5	5	5	5	5	5	5	5
		Output 30	6	6	6	6	6	6	6	6	6	6
		Output 31	7	7	7	7	7	7	7	7	7	7
		Output 32	8	8	8	8	8	8	8	8	8	8

LOC	PAGE	DESCRIPTION										
416	7	CODES 61-70 OUTPUT SELECTION (Circle the numbers to disable)										
		User	61	62	63	64	65	66	67	68	69	70
		Output 25	1	1	1	1	1	1	1	1	1	1
		Output 26	2	2	2	2	2	2	2	2	2	2
		Output 27	3	3	3	3	3	3	3	3	3	3
		Output 28	4	4	4	4	4	4	4	4	4	4
		Output 29	5	5	5	5	5	5	5	5	5	5
		Output 30	6	6	6	6	6	6	6	6	6	6
		Output 31	7	7	7	7	7	7	7	7	7	7
		Output 32	8	8	8	8	8	8	8	8	8	8
417	7	CODES 71-80 OUTPUT SELECTION (Circle the numbers to disable)										
		User	71	72	73	74	75	76	77	78	79	80
		Output 25	1	1	1	1	1	1	1	1	1	1
		Output 26	2	2	2	2	2	2	2	2	2	2
		Output 27	3	3	3	3	3	3	3	3	3	3
		Output 28	4	4	4	4	4	4	4	4	4	4
		Output 29	5	5	5	5	5	5	5	5	5	5
		Output 30	6	6	6	6	6	6	6	6	6	6
		Output 31	7	7	7	7	7	7	7	7	7	7
		Output 32	8	8	8	8	8	8	8	8	8	8
418	7	CODES 81-90 OUTPUT SELECTION (Circle the numbers to disable)										
		User	81	82	83	84	85	86	87	88	89	90
		Output 25	1	1	1	1	1	1	1	1	1	1
		Output 26	2	2	2	2	2	2	2	2	2	2
		Output 27	3	3	3	3	3	3	3	3	3	3
		Output 28	4	4	4	4	4	4	4	4	4	4
		Output 29	5	5	5	5	5	5	5	5	5	5
		Output 30	6	6	6	6	6	6	6	6	6	6
		Output 31	7	7	7	7	7	7	7	7	7	7
		Output 32	8	8	8	8	8	8	8	8	8	8
419	7	CODES 91-100 OUTPUT SELECTION (Circle the numbers to disable)										
		User	91	92	93	94	95	96	97	98	99	100
		Output 25	1	1	1	1	1	1	1	1	1	1
		Output 26	2	2	2	2	2	2	2	2	2	2
		Output 27	3	3	3	3	3	3	3	3	3	3
		Output 28	4	4	4	4	4	4	4	4	4	4
		Output 29	5	5	5	5	5	5	5	5	5	5
		Output 30	6	6	6	6	6	6	6	6	6	6
		Output 31	7	7	7	7	7	7	7	7	7	7
		Output 32	8	8	8	8	8	8	8	8	8	8
420	7	CODES 101-110 OUTPUT SELECTION (Circle the numbers to disable)										
		User	101	102	103	104	105	106	107	108	109	110
		Output 25	1	1	1	1	1	1	1	1	1	1
		Output 26	2	2	2	2	2	2	2	2	2	2
		Output 27	3	3	3	3	3	3	3	3	3	3
		Output 28	4	4	4	4	4	4	4	4	4	4
		Output 29	5	5	5	5	5	5	5	5	5	5
		Output 30	6	6	6	6	6	6	6	6	6	6
		Output 31	7	7	7	7	7	7	7	7	7	7
		Output 32	8	8	8	8	8	8	8	8	8	8
421	7	CODES 111-120 OUTPUT SELECTION (Circle the numbers to disable)										
		User	111	112	113	114	115	116	117	118	119	120
		Output 25	1	1	1	1	1	1	1	1	1	1
		Output 26	2	2	2	2	2	2	2	2	2	2
		Output 27	3	3	3	3	3	3	3	3	3	3
		Output 28	4	4	4	4	4	4	4	4	4	4
		Output 29	5	5	5	5	5	5	5	5	5	5
		Output 30	6	6	6	6	6	6	6	6	6	6
		Output 31	7	7	7	7	7	7	7	7	7	7
		Output 32	8	8	8	8	8	8	8	8	8	8

LOC	PAGE	DESCRIPTION										
422	7	CODES 121-130 OUTPUT SELECTION (Circle the numbers to disable)										
		User	121	122	123	124	125	126	127	128	129	130
		Output 25	1	1	1	1	1	1	1	1	1	1
		Output 26	2	2	2	2	2	2	2	2	2	2
		Output 27	3	3	3	3	3	3	3	3	3	3
		Output 28	4	4	4	4	4	4	4	4	4	4
		Output 29	5	5	5	5	5	5	5	5	5	5
		Output 30	6	6	6	6	6	6	6	6	6	6
		Output 31	7	7	7	7	7	7	7	7	7	7
		Output 32	8	8	8	8	8	8	8	8	8	8
423	7	CODES 131-140 OUTPUT SELECTION (Circle the numbers to disable)										
		User	131	132	133	134	135	136	137	138	139	140
		Output 25	1	1	1	1	1	1	1	1	1	1
		Output 26	2	2	2	2	2	2	2	2	2	2
		Output 27	3	3	3	3	3	3	3	3	3	3
		Output 28	4	4	4	4	4	4	4	4	4	4
		Output 29	5	5	5	5	5	5	5	5	5	5
		Output 30	6	6	6	6	6	6	6	6	6	6
		Output 31	7	7	7	7	7	7	7	7	7	7
		Output 32	8	8	8	8	8	8	8	8	8	8
424	7	CODES 141-150 OUTPUT SELECTION (Circle the numbers to disable)										
		User	141	142	143	144	145	146	147	148	149	150
		Output 25	1	1	1	1	1	1	1	1	1	1
		Output 26	2	2	2	2	2	2	2	2	2	2
		Output 27	3	3	3	3	3	3	3	3	3	3
		Output 28	4	4	4	4	4	4	4	4	4	4
		Output 29	5	5	5	5	5	5	5	5	5	5
		Output 30	6	6	6	6	6	6	6	6	6	6
		Output 31	7	7	7	7	7	7	7	7	7	7
		Output 32	8	8	8	8	8	8	8	8	8	8
425	7	CODES 151-160 OUTPUT SELECTION (Circle the numbers to disable)										
		User	151	152	153	154	155	156	157	158	159	160
		Output 25	1	1	1	1	1	1	1	1	1	1
		Output 26	2	2	2	2	2	2	2	2	2	2
		Output 27	3	3	3	3	3	3	3	3	3	3
		Output 28	4	4	4	4	4	4	4	4	4	4
		Output 29	5	5	5	5	5	5	5	5	5	5
		Output 30	6	6	6	6	6	6	6	6	6	6
		Output 31	7	7	7	7	7	7	7	7	7	7
		Output 32	8	8	8	8	8	8	8	8	8	8
426	7	CODES 161-170 OUTPUT SELECTION (Circle the numbers to disable)										
		User	161	162	163	164	165	166	167	168	169	170
		Output 25	1	1	1	1	1	1	1	1	1	1
		Output 26	2	2	2	2	2	2	2	2	2	2
		Output 27	3	3	3	3	3	3	3	3	3	3
		Output 28	4	4	4	4	4	4	4	4	4	4
		Output 29	5	5	5	5	5	5	5	5	5	5
		Output 30	6	6	6	6	6	6	6	6	6	6
		Output 31	7	7	7	7	7	7	7	7	7	7
		Output 32	8	8	8	8	8	8	8	8	8	8
427	7	CODES 171-180 OUTPUT SELECTION (Circle the numbers to disable)										
		User	171	172	173	174	175	176	177	178	179	180
		Output 25	1	1	1	1	1	1	1	1	1	1
		Output 26	2	2	2	2	2	2	2	2	2	2
		Output 27	3	3	3	3	3	3	3	3	3	3
		Output 28	4	4	4	4	4	4	4	4	4	4
		Output 29	5	5	5	5	5	5	5	5	5	5
		Output 30	6	6	6	6	6	6	6	6	6	6
		Output 31	7	7	7	7	7	7	7	7	7	7
		Output 32	8	8	8	8	8	8	8	8	8	8

LOC	PAGE	DESCRIPTION										
428	7	CODES 181-190 OUTPUT SELECTION (Circle the numbers to disable)										
		User	181	182	183	184	185	186	187	188	189	190
		Output 25	1	1	1	1	1	1	1	1	1	1
		Output 26	2	2	2	2	2	2	2	2	2	2
		Output 27	3	3	3	3	3	3	3	3	3	3
		Output 28	4	4	4	4	4	4	4	4	4	4
		Output 29	5	5	5	5	5	5	5	5	5	5
		Output 30	6	6	6	6	6	6	6	6	6	6
		Output 31	7	7	7	7	7	7	7	7	7	7
		Output 32	8	8	8	8	8	8	8	8	8	8
429	7	CODES 191-200 OUTPUT SELECTION (Circle the numbers to disable)										
		User	191	192	193	194	195	196	197	198	199	200
		Output 25	1	1	1	1	1	1	1	1	1	1
		Output 26	2	2	2	2	2	2	2	2	2	2
		Output 27	3	3	3	3	3	3	3	3	3	3
		Output 28	4	4	4	4	4	4	4	4	4	4
		Output 29	5	5	5	5	5	5	5	5	5	5
		Output 30	6	6	6	6	6	6	6	6	6	6
		Output 31	7	7	7	7	7	7	7	7	7	7
		Output 32	8	8	8	8	8	8	8	8	8	8
430	7	CODES 201-210 OUTPUT SELECTION (Circle the numbers to disable)										
		User	201	202	203	204	205	206	207	208	209	210
		Output 25	1	1	1	1	1	1	1	1	1	1
		Output 26	2	2	2	2	2	2	2	2	2	2
		Output 27	3	3	3	3	3	3	3	3	3	3
		Output 28	4	4	4	4	4	4	4	4	4	4
		Output 29	5	5	5	5	5	5	5	5	5	5
		Output 30	6	6	6	6	6	6	6	6	6	6
		Output 31	7	7	7	7	7	7	7	7	7	7
		Output 32	8	8	8	8	8	8	8	8	8	8
431	7	CODES 211-220 OUTPUT SELECTION (Circle the numbers to disable)										
		User	211	212	213	214	215	216	217	218	219	220
		Output 25	1	1	1	1	1	1	1	1	1	1
		Output 26	2	2	2	2	2	2	2	2	2	2
		Output 27	3	3	3	3	3	3	3	3	3	3
		Output 28	4	4	4	4	4	4	4	4	4	4
		Output 29	5	5	5	5	5	5	5	5	5	5
		Output 30	6	6	6	6	6	6	6	6	6	6
		Output 31	7	7	7	7	7	7	7	7	7	7
		Output 32	8	8	8	8	8	8	8	8	8	8
432	7	CODES 221-230 OUTPUT SELECTION (Circle the numbers to disable)										
		User	221	222	223	224	225	226	227	228	229	230
		Output 25	1	1	1	1	1	1	1	1	1	1
		Output 26	2	2	2	2	2	2	2	2	2	2
		Output 27	3	3	3	3	3	3	3	3	3	3
		Output 28	4	4	4	4	4	4	4	4	4	4
		Output 29	5	5	5	5	5	5	5	5	5	5
		Output 30	6	6	6	6	6	6	6	6	6	6
		Output 31	7	7	7	7	7	7	7	7	7	7
		Output 32	8	8	8	8	8	8	8	8	8	8
433	7	CODES 231-240 OUTPUT SELECTION (Circle the numbers to disable)										
		User	231	232	233	234	235	236	237	238	239	240
		Output 25	1	1	1	1	1	1	1	1	1	1
		Output 26	2	2	2	2	2	2	2	2	2	2
		Output 27	3	3	3	3	3	3	3	3	3	3
		Output 28	4	4	4	4	4	4	4	4	4	4
		Output 29	5	5	5	5	5	5	5	5	5	5
		Output 30	6	6	6	6	6	6	6	6	6	6
		Output 31	7	7	7	7	7	7	7	7	7	7
		Output 32	8	8	8	8	8	8	8	8	8	8

LOC	PAGE	DESCRIPTION										
434	7	CODES 1-10 OUTPUT SELECTION (Circle the numbers to disable)										
		User	1	2	3	4	5	6	7	8	9	10
		Output 33	1	1	1	1	1	1	1	1	1	1
		Output 34	2	2	2	2	2	2	2	2	2	2
		Output 35	3	3	3	3	3	3	3	3	3	3
		Output 36	4	4	4	4	4	4	4	4	4	4
		Output 37	5	5	5	5	5	5	5	5	5	5
		Output 38	6	6	6	6	6	6	6	6	6	6
		Output 39	7	7	7	7	7	7	7	7	7	7
		Output 40	8	8	8	8	8	8	8	8	8	8
435	7	CODES 11-20 OUTPUT SELECTION (Circle the numbers to disable)										
		User	11	12	13	14	15	16	17	18	19	20
		Output 33	1	1	1	1	1	1	1	1	1	1
		Output 34	2	2	2	2	2	2	2	2	2	2
		Output 35	3	3	3	3	3	3	3	3	3	3
		Output 36	4	4	4	4	4	4	4	4	4	4
		Output 37	5	5	5	5	5	5	5	5	5	5
		Output 38	6	6	6	6	6	6	6	6	6	6
		Output 39	7	7	7	7	7	7	7	7	7	7
		Output 40	8	8	8	8	8	8	8	8	8	8
436	7	CODES 21-30 OUTPUT SELECTION (Circle the numbers to disable)										
		User	21	22	23	24	25	26	27	28	29	30
		Output 33	1	1	1	1	1	1	1	1	1	1
		Output 34	2	2	2	2	2	2	2	2	2	2
		Output 35	3	3	3	3	3	3	3	3	3	3
		Output 36	4	4	4	4	4	4	4	4	4	4
		Output 37	5	5	5	5	5	5	5	5	5	5
		Output 38	6	6	6	6	6	6	6	6	6	6
		Output 39	7	7	7	7	7	7	7	7	7	7
		Output 40	8	8	8	8	8	8	8	8	8	8
437	7	CODES 31-40 OUTPUT SELECTION (Circle the numbers to disable)										
		User	31	32	33	34	35	36	37	38	39	40
		Output 33	1	1	1	1	1	1	1	1	1	1
		Output 34	2	2	2	2	2	2	2	2	2	2
		Output 35	3	3	3	3	3	3	3	3	3	3
		Output 36	4	4	4	4	4	4	4	4	4	4
		Output 37	5	5	5	5	5	5	5	5	5	5
		Output 38	6	6	6	6	6	6	6	6	6	6
		Output 39	7	7	7	7	7	7	7	7	7	7
		Output 40	8	8	8	8	8	8	8	8	8	8
438	7	CODES 41-50 OUTPUT SELECTION (Circle the numbers to disable)										
		User	41	42	43	44	45	46	47	48	49	50
		Output 33	1	1	1	1	1	1	1	1	1	1
		Output 34	2	2	2	2	2	2	2	2	2	2
		Output 35	3	3	3	3	3	3	3	3	3	3
		Output 36	4	4	4	4	4	4	4	4	4	4
		Output 37	5	5	5	5	5	5	5	5	5	5
		Output 38	6	6	6	6	6	6	6	6	6	6
		Output 39	7	7	7	7	7	7	7	7	7	7
		Output 40	8	8	8	8	8	8	8	8	8	8
439	7	CODES 51-60 OUTPUT SELECTION (Circle the numbers to disable)										
		User	51	52	53	54	55	56	57	58	59	60
		Output 33	1	1	1	1	1	1	1	1	1	1
		Output 34	2	2	2	2	2	2	2	2	2	2
		Output 35	3	3	3	3	3	3	3	3	3	3
		Output 36	4	4	4	4	4	4	4	4	4	4
		Output 37	5	5	5	5	5	5	5	5	5	5
		Output 38	6	6	6	6	6	6	6	6	6	6
		Output 39	7	7	7	7	7	7	7	7	7	7
		Output 40	8	8	8	8	8	8	8	8	8	8



LOC	PAGE	DESCRIPTION										
440	7	CODES 61-70 OUTPUT SELECTION (Circle the numbers to disable)										
		User	61	62	63	64	65	66	67	68	69	70
		Output 33	1	1	1	1	1	1	1	1	1	1
		Output 34	2	2	2	2	2	2	2	2	2	2
		Output 35	3	3	3	3	3	3	3	3	3	3
		Output 36	4	4	4	4	4	4	4	4	4	4
		Output 37	5	5	5	5	5	5	5	5	5	5
		Output 38	6	6	6	6	6	6	6	6	6	6
		Output 39	7	7	7	7	7	7	7	7	7	7
		Output 40	8	8	8	8	8	8	8	8	8	8
441	7	CODES 71-80 OUTPUT SELECTION (Circle the numbers to disable)										
		User	71	72	73	74	75	76	77	78	79	80
		Output 33	1	1	1	1	1	1	1	1	1	1
		Output 34	2	2	2	2	2	2	2	2	2	2
		Output 35	3	3	3	3	3	3	3	3	3	3
		Output 36	4	4	4	4	4	4	4	4	4	4
		Output 37	5	5	5	5	5	5	5	5	5	5
		Output 38	6	6	6	6	6	6	6	6	6	6
		Output 39	7	7	7	7	7	7	7	7	7	7
		Output 40	8	8	8	8	8	8	8	8	8	8
442	7	CODES 81-90 OUTPUT SELECTION (Circle the numbers to disable)										
		User	81	82	83	84	85	86	87	88	89	90
		Output 33	1	1	1	1	1	1	1	1	1	1
		Output 34	2	2	2	2	2	2	2	2	2	2
		Output 35	3	3	3	3	3	3	3	3	3	3
		Output 36	4	4	4	4	4	4	4	4	4	4
		Output 37	5	5	5	5	5	5	5	5	5	5
		Output 38	6	6	6	6	6	6	6	6	6	6
		Output 39	7	7	7	7	7	7	7	7	7	7
		Output 40	8	8	8	8	8	8	8	8	8	8
443	7	CODES 91-100 OUTPUT SELECTION (Circle the numbers to disable)										
		User	91	92	93	94	95	96	97	98	99	100
		Output 33	1	1	1	1	1	1	1	1	1	1
		Output 34	2	2	2	2	2	2	2	2	2	2
		Output 35	3	3	3	3	3	3	3	3	3	3
		Output 36	4	4	4	4	4	4	4	4	4	4
		Output 37	5	5	5	5	5	5	5	5	5	5
		Output 38	6	6	6	6	6	6	6	6	6	6
		Output 39	7	7	7	7	7	7	7	7	7	7
		Output 40	8	8	8	8	8	8	8	8	8	8
444	7	CODES 101-110 OUTPUT SELECTION (Circle the numbers to disable)										
		User	101	102	103	104	105	106	107	108	109	110
		Output 33	1	1	1	1	1	1	1	1	1	1
		Output 34	2	2	2	2	2	2	2	2	2	2
		Output 35	3	3	3	3	3	3	3	3	3	3
		Output 36	4	4	4	4	4	4	4	4	4	4
		Output 37	5	5	5	5	5	5	5	5	5	5
		Output 38	6	6	6	6	6	6	6	6	6	6
		Output 39	7	7	7	7	7	7	7	7	7	7
		Output 40	8	8	8	8	8	8	8	8	8	8
445	7	CODES 111-120 OUTPUT SELECTION (Circle the numbers to disable)										
		User	111	112	113	114	115	116	117	118	119	120
		Output 33	1	1	1	1	1	1	1	1	1	1
		Output 34	2	2	2	2	2	2	2	2	2	2
		Output 35	3	3	3	3	3	3	3	3	3	3
		Output 36	4	4	4	4	4	4	4	4	4	4
		Output 37	5	5	5	5	5	5	5	5	5	5
		Output 38	6	6	6	6	6	6	6	6	6	6
		Output 39	7	7	7	7	7	7	7	7	7	7
		Output 40	8	8	8	8	8	8	8	8	8	8

LOC	PAGE	DESCRIPTION										
446	7	CODES 121-130 OUTPUT SELECTION (Circle the numbers to disable)										
		User	121	122	123	124	125	126	127	128	129	130
		Output 33	1	1	1	1	1	1	1	1	1	1
		Output 34	2	2	2	2	2	2	2	2	2	2
		Output 35	3	3	3	3	3	3	3	3	3	3
		Output 36	4	4	4	4	4	4	4	4	4	4
		Output 37	5	5	5	5	5	5	5	5	5	5
		Output 38	6	6	6	6	6	6	6	6	6	6
		Output 39	7	7	7	7	7	7	7	7	7	7
		Output 40	8	8	8	8	8	8	8	8	8	8
447	7	CODES 131-140 OUTPUT SELECTION (Circle the numbers to disable)										
		User	131	132	133	134	135	136	137	138	139	140
		Output 33	1	1	1	1	1	1	1	1	1	1
		Output 34	2	2	2	2	2	2	2	2	2	2
		Output 35	3	3	3	3	3	3	3	3	3	3
		Output 36	4	4	4	4	4	4	4	4	4	4
		Output 37	5	5	5	5	5	5	5	5	5	5
		Output 38	6	6	6	6	6	6	6	6	6	6
		Output 39	7	7	7	7	7	7	7	7	7	7
		Output 40	8	8	8	8	8	8	8	8	8	8
448	7	CODES 141-150 OUTPUT SELECTION (Circle the numbers to disable)										
		User	141	142	143	144	145	146	147	148	149	150
		Output 33	1	1	1	1	1	1	1	1	1	1
		Output 34	2	2	2	2	2	2	2	2	2	2
		Output 35	3	3	3	3	3	3	3	3	3	3
		Output 36	4	4	4	4	4	4	4	4	4	4
		Output 37	5	5	5	5	5	5	5	5	5	5
		Output 38	6	6	6	6	6	6	6	6	6	6
		Output 39	7	7	7	7	7	7	7	7	7	7
		Output 40	8	8	8	8	8	8	8	8	8	8
449	7	CODES 151-160 OUTPUT SELECTION (Circle the numbers to disable)										
		User	151	152	153	154	155	156	157	158	159	160
		Output 33	1	1	1	1	1	1	1	1	1	1
		Output 34	2	2	2	2	2	2	2	2	2	2
		Output 35	3	3	3	3	3	3	3	3	3	3
		Output 36	4	4	4	4	4	4	4	4	4	4
		Output 37	5	5	5	5	5	5	5	5	5	5
		Output 38	6	6	6	6	6	6	6	6	6	6
		Output 39	7	7	7	7	7	7	7	7	7	7
		Output 40	8	8	8	8	8	8	8	8	8	8
450	7	CODES 161-170 OUTPUT SELECTION (Circle the numbers to disable)										
		User	161	162	163	164	165	166	167	168	169	170
		Output 33	1	1	1	1	1	1	1	1	1	1
		Output 34	2	2	2	2	2	2	2	2	2	2
		Output 35	3	3	3	3	3	3	3	3	3	3
		Output 36	4	4	4	4	4	4	4	4	4	4
		Output 37	5	5	5	5	5	5	5	5	5	5
		Output 38	6	6	6	6	6	6	6	6	6	6
		Output 39	7	7	7	7	7	7	7	7	7	7
		Output 40	8	8	8	8	8	8	8	8	8	8
451	7	CODES 171-180 OUTPUT SELECTION (Circle the numbers to disable)										
		User	171	172	173	174	175	176	177	178	179	180
		Output 33	1	1	1	1	1	1	1	1	1	1
		Output 34	2	2	2	2	2	2	2	2	2	2
		Output 35	3	3	3	3	3	3	3	3	3	3
		Output 36	4	4	4	4	4	4	4	4	4	4
		Output 37	5	5	5	5	5	5	5	5	5	5
		Output 38	6	6	6	6	6	6	6	6	6	6
		Output 39	7	7	7	7	7	7	7	7	7	7
		Output 40	8	8	8	8	8	8	8	8	8	8

LOC	PAGE	DESCRIPTION										
452	7	CODES 181-190 OUTPUT SELECTION (Circle the numbers to disable)										
		User	181	182	183	184	185	186	187	188	189	190
		Output 33	1	1	1	1	1	1	1	1	1	1
		Output 34	2	2	2	2	2	2	2	2	2	2
		Output 35	3	3	3	3	3	3	3	3	3	3
		Output 36	4	4	4	4	4	4	4	4	4	4
		Output 37	5	5	5	5	5	5	5	5	5	5
		Output 38	6	6	6	6	6	6	6	6	6	6
		Output 39	7	7	7	7	7	7	7	7	7	7
		Output 40	8	8	8	8	8	8	8	8	8	8
453	7	CODES 191-200 OUTPUT SELECTION (Circle the numbers to disable)										
		User	191	192	193	194	195	196	197	198	199	200
		Output 33	1	1	1	1	1	1	1	1	1	1
		Output 34	2	2	2	2	2	2	2	2	2	2
		Output 35	3	3	3	3	3	3	3	3	3	3
		Output 36	4	4	4	4	4	4	4	4	4	4
		Output 37	5	5	5	5	5	5	5	5	5	5
		Output 38	6	6	6	6	6	6	6	6	6	6
		Output 39	7	7	7	7	7	7	7	7	7	7
		Output 40	8	8	8	8	8	8	8	8	8	8
454	7	CODES 201-210 OUTPUT SELECTION (Circle the numbers to disable)										
		User	201	202	203	204	205	206	207	208	209	210
		Output 33	1	1	1	1	1	1	1	1	1	1
		Output 34	2	2	2	2	2	2	2	2	2	2
		Output 35	3	3	3	3	3	3	3	3	3	3
		Output 36	4	4	4	4	4	4	4	4	4	4
		Output 37	5	5	5	5	5	5	5	5	5	5
		Output 38	6	6	6	6	6	6	6	6	6	6
		Output 39	7	7	7	7	7	7	7	7	7	7
		Output 40	8	8	8	8	8	8	8	8	8	8
455	7	CODES 211-220 OUTPUT SELECTION (Circle the numbers to disable)										
		User	211	212	213	214	215	216	217	218	219	220
		Output 33	1	1	1	1	1	1	1	1	1	1
		Output 34	2	2	2	2	2	2	2	2	2	2
		Output 35	3	3	3	3	3	3	3	3	3	3
		Output 36	4	4	4	4	4	4	4	4	4	4
		Output 37	5	5	5	5	5	5	5	5	5	5
		Output 38	6	6	6	6	6	6	6	6	6	6
		Output 39	7	7	7	7	7	7	7	7	7	7
		Output 40	8	8	8	8	8	8	8	8	8	8
456	7	CODES 221-230 OUTPUT SELECTION (Circle the numbers to disable)										
		User	221	222	223	224	225	226	227	228	229	230
		Output 33	1	1	1	1	1	1	1	1	1	1
		Output 34	2	2	2	2	2	2	2	2	2	2
		Output 35	3	3	3	3	3	3	3	3	3	3
		Output 36	4	4	4	4	4	4	4	4	4	4
		Output 37	5	5	5	5	5	5	5	5	5	5
		Output 38	6	6	6	6	6	6	6	6	6	6
		Output 39	7	7	7	7	7	7	7	7	7	7
		Output 40	8	8	8	8	8	8	8	8	8	8
457	7	CODES 231-240 OUTPUT SELECTION (Circle the numbers to disable)										
		User	231	232	233	234	235	236	237	238	239	240
		Output 33	1	1	1	1	1	1	1	1	1	1
		Output 34	2	2	2	2	2	2	2	2	2	2
		Output 35	3	3	3	3	3	3	3	3	3	3
		Output 36	4	4	4	4	4	4	4	4	4	4
		Output 37	5	5	5	5	5	5	5	5	5	5
		Output 38	6	6	6	6	6	6	6	6	6	6
		Output 39	7	7	7	7	7	7	7	7	7	7
		Output 40	8	8	8	8	8	8	8	8	8	8

LOC	PAGE	DESCRIPTION										
458	7	CODES 1-10 OUTPUT SELECTION (Circle the numbers to disable)										
		User	1	2	3	4	5	6	7	8	9	10
		Output 41	1	1	1	1	1	1	1	1	1	1
		Output 42	2	2	2	2	2	2	2	2	2	2
		Output 43	3	3	3	3	3	3	3	3	3	3
		Output 44	4	4	4	4	4	4	4	4	4	4
		Output 45	5	5	5	5	5	5	5	5	5	5
		Output 46	6	6	6	6	6	6	6	6	6	6
		Output 47	7	7	7	7	7	7	7	7	7	7
		Output 48	8	8	8	8	8	8	8	8	8	8
459	7	CODES 11-20 OUTPUT SELECTION (Circle the numbers to disable)										
		User	11	12	13	14	15	16	17	18	19	20
		Output 41	1	1	1	1	1	1	1	1	1	1
		Output 42	2	2	2	2	2	2	2	2	2	2
		Output 43	3	3	3	3	3	3	3	3	3	3
		Output 44	4	4	4	4	4	4	4	4	4	4
		Output 45	5	5	5	5	5	5	5	5	5	5
		Output 46	6	6	6	6	6	6	6	6	6	6
		Output 47	7	7	7	7	7	7	7	7	7	7
		Output 48	8	8	8	8	8	8	8	8	8	8
460	7	CODES 21-30 OUTPUT SELECTION (Circle the numbers to disable)										
		User	21	22	23	24	25	26	27	28	29	30
		Output 41	1	1	1	1	1	1	1	1	1	1
		Output 42	2	2	2	2	2	2	2	2	2	2
		Output 43	3	3	3	3	3	3	3	3	3	3
		Output 44	4	4	4	4	4	4	4	4	4	4
		Output 45	5	5	5	5	5	5	5	5	5	5
		Output 46	6	6	6	6	6	6	6	6	6	6
		Output 47	7	7	7	7	7	7	7	7	7	7
		Output 48	8	8	8	8	8	8	8	8	8	8
461	7	CODES 31-40 OUTPUT SELECTION (Circle the numbers to disable)										
		User	31	32	33	34	35	36	37	38	39	40
		Output 41	1	1	1	1	1	1	1	1	1	1
		Output 42	2	2	2	2	2	2	2	2	2	2
		Output 43	3	3	3	3	3	3	3	3	3	3
		Output 44	4	4	4	4	4	4	4	4	4	4
		Output 45	5	5	5	5	5	5	5	5	5	5
		Output 46	6	6	6	6	6	6	6	6	6	6
		Output 47	7	7	7	7	7	7	7	7	7	7
		Output 48	8	8	8	8	8	8	8	8	8	8
462	7	CODES 41-50 OUTPUT SELECTION (Circle the numbers to disable)										
		User	41	42	43	44	45	46	47	48	49	50
		Output 41	1	1	1	1	1	1	1	1	1	1
		Output 42	2	2	2	2	2	2	2	2	2	2
		Output 43	3	3	3	3	3	3	3	3	3	3
		Output 44	4	4	4	4	4	4	4	4	4	4
		Output 45	5	5	5	5	5	5	5	5	5	5
		Output 46	6	6	6	6	6	6	6	6	6	6
		Output 47	7	7	7	7	7	7	7	7	7	7
		Output 48	8	8	8	8	8	8	8	8	8	8
463	7	CODES 51-60 OUTPUT SELECTION (Circle the numbers to disable)										
		User	51	52	53	54	55	56	57	58	59	60
		Output 41	1	1	1	1	1	1	1	1	1	1
		Output 42	2	2	2	2	2	2	2	2	2	2
		Output 43	3	3	3	3	3	3	3	3	3	3
		Output 44	4	4	4	4	4	4	4	4	4	4
		Output 45	5	5	5	5	5	5	5	5	5	5
		Output 46	6	6	6	6	6	6	6	6	6	6
		Output 47	7	7	7	7	7	7	7	7	7	7
		Output 48	8	8	8	8	8	8	8	8	8	8

LOC	PAGE	DESCRIPTION										
464	7	CODES 61-70 OUTPUT SELECTION (Circle the numbers to disable)										
		User	61	62	63	64	65	66	67	68	69	70
		Output 41	1	1	1	1	1	1	1	1	1	1
		Output 42	2	2	2	2	2	2	2	2	2	2
		Output 43	3	3	3	3	3	3	3	3	3	3
		Output 44	4	4	4	4	4	4	4	4	4	4
		Output 45	5	5	5	5	5	5	5	5	5	5
		Output 46	6	6	6	6	6	6	6	6	6	6
		Output 47	7	7	7	7	7	7	7	7	7	7
		Output 48	8	8	8	8	8	8	8	8	8	8
465	7	CODES 71-80 OUTPUT SELECTION (Circle the numbers to disable)										
		User	71	72	73	74	75	76	77	78	79	80
		Output 41	1	1	1	1	1	1	1	1	1	1
		Output 42	2	2	2	2	2	2	2	2	2	2
		Output 43	3	3	3	3	3	3	3	3	3	3
		Output 44	4	4	4	4	4	4	4	4	4	4
		Output 45	5	5	5	5	5	5	5	5	5	5
		Output 46	6	6	6	6	6	6	6	6	6	6
		Output 47	7	7	7	7	7	7	7	7	7	7
		Output 48	8	8	8	8	8	8	8	8	8	8
466	7	CODES 81-90 OUTPUT SELECTION (Circle the numbers to disable)										
		User	81	82	83	84	85	86	87	88	89	90
		Output 41	1	1	1	1	1	1	1	1	1	1
		Output 42	2	2	2	2	2	2	2	2	2	2
		Output 43	3	3	3	3	3	3	3	3	3	3
		Output 44	4	4	4	4	4	4	4	4	4	4
		Output 45	5	5	5	5	5	5	5	5	5	5
		Output 46	6	6	6	6	6	6	6	6	6	6
		Output 47	7	7	7	7	7	7	7	7	7	7
		Output 48	8	8	8	8	8	8	8	8	8	8
467	7	CODES 91-100 OUTPUT SELECTION (Circle the numbers to disable)										
		User	91	92	93	94	95	96	97	98	99	100
		Output 41	1	1	1	1	1	1	1	1	1	1
		Output 42	2	2	2	2	2	2	2	2	2	2
		Output 43	3	3	3	3	3	3	3	3	3	3
		Output 44	4	4	4	4	4	4	4	4	4	4
		Output 45	5	5	5	5	5	5	5	5	5	5
		Output 46	6	6	6	6	6	6	6	6	6	6
		Output 47	7	7	7	7	7	7	7	7	7	7
		Output 48	8	8	8	8	8	8	8	8	8	8
468	7	CODES 101-110 OUTPUT SELECTION (Circle the numbers to disable)										
		User	101	102	103	104	105	106	107	108	109	110
		Output 41	1	1	1	1	1	1	1	1	1	1
		Output 42	2	2	2	2	2	2	2	2	2	2
		Output 43	3	3	3	3	3	3	3	3	3	3
		Output 44	4	4	4	4	4	4	4	4	4	4
		Output 45	5	5	5	5	5	5	5	5	5	5
		Output 46	6	6	6	6	6	6	6	6	6	6
		Output 47	7	7	7	7	7	7	7	7	7	7
		Output 48	8	8	8	8	8	8	8	8	8	8
469	7	CODES 111-120 OUTPUT SELECTION (Circle the numbers to disable)										
		User	111	112	113	114	115	116	117	118	119	120
		Output 41	1	1	1	1	1	1	1	1	1	1
		Output 42	2	2	2	2	2	2	2	2	2	2
		Output 43	3	3	3	3	3	3	3	3	3	3
		Output 44	4	4	4	4	4	4	4	4	4	4
		Output 45	5	5	5	5	5	5	5	5	5	5
		Output 46	6	6	6	6	6	6	6	6	6	6
		Output 47	7	7	7	7	7	7	7	7	7	7
		Output 48	8	8	8	8	8	8	8	8	8	8

LOC	PAGE	DESCRIPTION										
470	7	CODES 121-130 OUTPUT SELECTION (Circle the numbers to disable)										
		User	121	122	123	124	125	126	127	128	129	130
		Output 41	1	1	1	1	1	1	1	1	1	1
		Output 42	2	2	2	2	2	2	2	2	2	2
		Output 43	3	3	3	3	3	3	3	3	3	3
		Output 44	4	4	4	4	4	4	4	4	4	4
		Output 45	5	5	5	5	5	5	5	5	5	5
		Output 46	6	6	6	6	6	6	6	6	6	6
		Output 47	7	7	7	7	7	7	7	7	7	7
		Output 48	8	8	8	8	8	8	8	8	8	8
471	7	CODES 131-140 OUTPUT SELECTION (Circle the numbers to disable)										
		User	131	132	133	134	135	136	137	138	139	140
		Output 41	1	1	1	1	1	1	1	1	1	1
		Output 42	2	2	2	2	2	2	2	2	2	2
		Output 43	3	3	3	3	3	3	3	3	3	3
		Output 44	4	4	4	4	4	4	4	4	4	4
		Output 45	5	5	5	5	5	5	5	5	5	5
		Output 46	6	6	6	6	6	6	6	6	6	6
		Output 47	7	7	7	7	7	7	7	7	7	7
		Output 48	8	8	8	8	8	8	8	8	8	8
472	7	CODES 141-150 OUTPUT SELECTION (Circle the numbers to disable)										
		User	141	142	143	144	145	146	147	148	149	150
		Output 41	1	1	1	1	1	1	1	1	1	1
		Output 42	2	2	2	2	2	2	2	2	2	2
		Output 43	3	3	3	3	3	3	3	3	3	3
		Output 44	4	4	4	4	4	4	4	4	4	4
		Output 45	5	5	5	5	5	5	5	5	5	5
		Output 46	6	6	6	6	6	6	6	6	6	6
		Output 47	7	7	7	7	7	7	7	7	7	7
		Output 48	8	8	8	8	8	8	8	8	8	8
473	7	CODES 151-160 OUTPUT SELECTION (Circle the numbers to disable)										
		User	151	152	153	154	155	156	157	158	159	160
		Output 41	1	1	1	1	1	1	1	1	1	1
		Output 42	2	2	2	2	2	2	2	2	2	2
		Output 43	3	3	3	3	3	3	3	3	3	3
		Output 44	4	4	4	4	4	4	4	4	4	4
		Output 45	5	5	5	5	5	5	5	5	5	5
		Output 46	6	6	6	6	6	6	6	6	6	6
		Output 47	7	7	7	7	7	7	7	7	7	7
		Output 48	8	8	8	8	8	8	8	8	8	8
474	7	CODES 161-170 OUTPUT SELECTION (Circle the numbers to disable)										
		User	161	162	163	164	165	166	167	168	169	170
		Output 41	1	1	1	1	1	1	1	1	1	1
		Output 42	2	2	2	2	2	2	2	2	2	2
		Output 43	3	3	3	3	3	3	3	3	3	3
		Output 44	4	4	4	4	4	4	4	4	4	4
		Output 45	5	5	5	5	5	5	5	5	5	5
		Output 46	6	6	6	6	6	6	6	6	6	6
		Output 47	7	7	7	7	7	7	7	7	7	7
		Output 48	8	8	8	8	8	8	8	8	8	8
475	7	CODES 171-180 OUTPUT SELECTION (Circle the numbers to disable)										
		User	171	172	173	174	175	176	177	178	179	180
		Output 41	1	1	1	1	1	1	1	1	1	1
		Output 42	2	2	2	2	2	2	2	2	2	2
		Output 43	3	3	3	3	3	3	3	3	3	3
		Output 44	4	4	4	4	4	4	4	4	4	4
		Output 45	5	5	5	5	5	5	5	5	5	5
		Output 46	6	6	6	6	6	6	6	6	6	6
		Output 47	7	7	7	7	7	7	7	7	7	7
		Output 48	8	8	8	8	8	8	8	8	8	8

LOC	PAGE	DESCRIPTION										
476	7	CODES 181-190 OUTPUT SELECTION (Circle the numbers to disable)										
		User	181	182	183	184	185	186	187	188	189	190
		Output 41	1	1	1	1	1	1	1	1	1	1
		Output 42	2	2	2	2	2	2	2	2	2	2
		Output 43	3	3	3	3	3	3	3	3	3	3
		Output 44	4	4	4	4	4	4	4	4	4	4
		Output 45	5	5	5	5	5	5	5	5	5	5
		Output 46	6	6	6	6	6	6	6	6	6	6
		Output 47	7	7	7	7	7	7	7	7	7	7
		Output 48	8	8	8	8	8	8	8	8	8	8
477	7	CODES 191-200 OUTPUT SELECTION (Circle the numbers to disable)										
		User	191	192	193	194	195	196	197	198	199	200
		Output 41	1	1	1	1	1	1	1	1	1	1
		Output 42	2	2	2	2	2	2	2	2	2	2
		Output 43	3	3	3	3	3	3	3	3	3	3
		Output 44	4	4	4	4	4	4	4	4	4	4
		Output 45	5	5	5	5	5	5	5	5	5	5
		Output 46	6	6	6	6	6	6	6	6	6	6
		Output 47	7	7	7	7	7	7	7	7	7	7
		Output 48	8	8	8	8	8	8	8	8	8	8
478	7	CODES 201-210 OUTPUT SELECTION (Circle the numbers to disable)										
		User	201	202	203	204	205	206	207	208	209	210
		Output 41	1	1	1	1	1	1	1	1	1	1
		Output 42	2	2	2	2	2	2	2	2	2	2
		Output 43	3	3	3	3	3	3	3	3	3	3
		Output 44	4	4	4	4	4	4	4	4	4	4
		Output 45	5	5	5	5	5	5	5	5	5	5
		Output 46	6	6	6	6	6	6	6	6	6	6
		Output 47	7	7	7	7	7	7	7	7	7	7
		Output 48	8	8	8	8	8	8	8	8	8	8
479	7	CODES 211-220 OUTPUT SELECTION (Circle the numbers to disable)										
		User	211	212	213	214	215	216	217	218	219	220
		Output 41	1	1	1	1	1	1	1	1	1	1
		Output 42	2	2	2	2	2	2	2	2	2	2
		Output 43	3	3	3	3	3	3	3	3	3	3
		Output 44	4	4	4	4	4	4	4	4	4	4
		Output 45	5	5	5	5	5	5	5	5	5	5
		Output 46	6	6	6	6	6	6	6	6	6	6
		Output 47	7	7	7	7	7	7	7	7	7	7
		Output 48	8	8	8	8	8	8	8	8	8	8
480	7	CODES 221-230 OUTPUT SELECTION (Circle the numbers to disable)										
		User	221	222	223	224	225	226	227	228	229	230
		Output 41	1	1	1	1	1	1	1	1	1	1
		Output 42	2	2	2	2	2	2	2	2	2	2
		Output 43	3	3	3	3	3	3	3	3	3	3
		Output 44	4	4	4	4	4	4	4	4	4	4
		Output 45	5	5	5	5	5	5	5	5	5	5
		Output 46	6	6	6	6	6	6	6	6	6	6
		Output 47	7	7	7	7	7	7	7	7	7	7
		Output 48	8	8	8	8	8	8	8	8	8	8
481	7	CODES 231-240 OUTPUT SELECTION (Circle the numbers to disable)										
		User	231	232	233	234	235	236	237	238	239	240
		Output 41	1	1	1	1	1	1	1	1	1	1
		Output 42	2	2	2	2	2	2	2	2	2	2
		Output 43	3	3	3	3	3	3	3	3	3	3
		Output 44	4	4	4	4	4	4	4	4	4	4
		Output 45	5	5	5	5	5	5	5	5	5	5
		Output 46	6	6	6	6	6	6	6	6	6	6
		Output 47	7	7	7	7	7	7	7	7	7	7
		Output 48	8	8	8	8	8	8	8	8	8	8

### 13. Appendix 1 PinPoint Address Worksheet

PID Address	Zone Number	Installation Location	Device Type	Address Switch Setting
0				_____
1				1_____
2				_2_____
3				12_____
4				__3_____
5				1_3_____
6				_23_____
7				123_____
8				___4_____
9				1__4_____
10				_2_4_____
11				12_4_____
12				__34_____
13				1_34_____
14				_234_____
15				1234_____
16				___5_____
17				1__5_____
18				_2_5_____
19				12_5_____
20				__3_5_____
21				1_3_5_____
22				_23_5_____
23				123_5_____
24				___45_____
25				1__45_____
26				_2_45_____
27				12_45_____
28				__345_____
29				1_345_____
30				_2345_____
31				12345_____
32				___6_____
33				1__6_____
34				_2_6_____
35				12_6_____
36				__3_6_____
37				1_3_6_____
38				_23_6_____
39				123_6_____
40				___46_____
41				1__4_6_____
42				_2_4_6_____
43				12_4_6_____
44				__34_6_____
45				1_34_6_____
46				_234_6_____
47				1234_6_____
48				___56_____
49				1__56_____
50				_2_56_____
51				12_56_____
52				__3_56_____
53				1_3_56_____
54				_23_56_____
55				123_56_____
56				___456_____
57				1__456_____
58				_2_456_____
59				12_456_____
60				__3456_____
61				1_3456_____
62				_23456_____
63				123456_____



PID Address	Zone Number	Installation Location	Device Type	Address Switch Setting
64				_____7_
65				1_____7_
66				_2_____7_
67				12_____7_
68				__3_____7_
69				1_3_____7_
70				_23_____7_
71				123_____7_
72				___4_____7_
73				1__4_____7_
74				_2_4_____7_
75				12_4_____7_
76				__34_____7_
77				1_34_____7_
78				_234_____7_
79				1234_____7_
80				_____5_7_
81				1____5_7_
82				_2____5_7_
83				12____5_7_
84				__3__5_7_
85				1_3__5_7_
86				_23__5_7_
87				123__5_7_
88				___45_7_
89				1__45_7_
90				_2__45_7_
91				12__45_7_
92				__345_7_
93				1_345_7_
94				_2345_7_
95				12345_7_
96				_____67_
97				1_____67_
98				_2_____67_
99				12_____67_
100				__3_____67_
101				1_3_____67_
102				_23_____67_
103				123_____67_
104				___4_____67_
105				1__4_____67_
106				_2_4_____67_
107				12_4_____67_
108				__34_____67_
109				1_34_____67_
110				_234_____67_
111				1234_____67_
112				_____567_
113				1____567_
114				_2____567_
115				12____567_
116				__3__567_
117				1_3__567_
118				_23__567_
119				123__567_
120				___4567_
121				1__4567_
122				_2__4567_
123				12__4567_
124				__34567_
125				1_34567_
126				_234567_
127				1234567_
128				_____8
129				1_____8

PID Address	Zone Number	Installation Location	Device Type	Address Switch Setting
130				_ 2 _ _ _ _ 8
131				1 2 _ _ _ _ 8
132				_ _ 3 _ _ _ 8
133				1 _ 3 _ _ _ 8
134				_ 2 3 _ _ _ 8
135				1 2 3 _ _ _ 8
136				_ _ _ 4 _ _ 8
137				1 _ _ 4 _ _ 8
138				_ 2 _ 4 _ _ 8
139				1 2 _ 4 _ _ 8
140				_ _ 3 4 _ _ 8
141				1 _ 3 4 _ _ 8
142				_ 2 3 4 _ _ 8
143				1 2 3 4 _ _ 8
144				_ _ _ _ 5 _ 8
145				1 _ _ _ 5 _ 8
146				_ 2 _ _ 5 _ 8
147				1 2 _ _ 5 _ 8
148				_ _ 3 _ 5 _ 8
149				1 _ 3 _ 5 _ 8
150				_ 2 3 _ 5 _ 8
151				1 2 3 _ 5 _ 8
152				_ _ _ 4 5 _ 8
153				1 _ _ 4 5 _ 8
154				_ 2 _ 4 5 _ 8
155				1 2 _ 4 5 _ 8
156				_ _ 3 4 5 _ 8
157				1 _ 3 4 5 _ 8
158				_ 2 3 4 5 _ 8
159				1 2 3 4 5 _ 8
160				_ _ _ _ 6 _ 8
161				1 _ _ _ 6 _ 8
162				_ 2 _ _ 6 _ 8
163				1 2 _ _ 6 _ 8
164				_ _ 3 _ 6 _ 8
165				1 _ 3 _ 6 _ 8
166				_ 2 3 _ 6 _ 8
167				1 2 3 _ 6 _ 8
168				_ _ _ 4 6 _ 8
169				1 _ _ 4 6 _ 8
170				_ 2 _ 4 6 _ 8
171				1 2 _ 4 6 _ 8
172				_ _ 3 4 _ 6 _ 8
173				1 _ 3 4 _ 6 _ 8
174				_ 2 3 4 _ 6 _ 8
175				1 2 3 4 _ 6 _ 8
176				_ _ _ _ 5 6 _ 8
177				1 _ _ _ 5 6 _ 8
178				_ 2 _ _ 5 6 _ 8
179				1 2 _ _ 5 6 _ 8
180				_ _ 3 _ 5 6 _ 8
181				1 _ 3 _ 5 6 _ 8
182				_ 2 3 _ 5 6 _ 8
183				1 2 3 _ 5 6 _ 8
184				_ _ _ 4 5 6 _ 8
185				1 _ _ 4 5 6 _ 8
186				_ 2 _ 4 5 6 _ 8
187				1 2 _ 4 5 6 _ 8
188				_ _ 3 4 5 6 _ 8
189				1 _ 3 4 5 6 _ 8
190				_ 2 3 4 5 6 _ 8
191				1 2 3 4 5 6 _ 8
192				_ _ _ _ _ 7 8
193				1 _ _ _ _ 7 8
194				_ 2 _ _ _ 7 8
195				1 2 _ _ _ 7 8
196				_ _ 3 _ _ 7 8

PID Address	Zone Number	Installation Location	Device Type	Address Switch Setting
197				1_3__78
198				_23___78
199				123___78
200				___4_78
201				1__4_78
202				_2_4_78
203				12_4_78
204				__34_78
205				1_34_78
206				_234_78
207				1234_78
208				____5_78
209				1___5_78
210				_2__5_78
211				12__5_78
212				__3_5_78
213				1_3_5_78
214				_23_5_78
215				123_5_78
216				__45_78
217				1__45_78
218				_2_45_78
219				12_45_78
220				__345_78
221				1_345_78
222				_2345_78
223				12345_78
224				____678
225				1____678
226				_2___678
227				12___678
228				__3__678
229				1_3__678
230				_23__678
231				123__678
232				___4_678
233				1__4_678
234				_2_4_678
235				12_4_678
236				__34_678
237				1_34_678
238				_234_678
239				1234_678
240				____5678
241				1___5678
242				_2__5678
243				12__5678
244				__3_5678
245				1_3_5678
246				_23_5678
247				123_5678
248				__45678
249				1__45678
250				_2_45678
251				12_45678
252				__345678
253				1_345678
254				_2345678
255	Reserved	Reserved	Reserved	12345678

## 14. UL & CE NOTICES

### UNDERWRITERS LABORATORIES

The NX-2192E is listed for the following UL standards:

- UL365** Police Station Connected Burglar Alarm Units and Systems
- UL609** Local Grade A Mercantile, Police Station Connect with Basic Line Security  
(\* requires #NX-003-C enclosure)
- UL864** Control Units for Fire-Protective Signaling Systems
- UL985** Household Fire Warning Systems & Units
- UL1023** Household Burglary Alarm Systems & Units
- UL1610** Grade B & C Central Station Burglar Alarm Unit
- UL1635** Digital Alarm Communicator System Units
- UL1637** Home Health Care Signaling Equipment

### PRODUCTS WHICH HAVE THE CE MARK ATTACHED



**MANUFACTURERS  
DECLARATION OF  
CONFORMITY**  
For



Product identification:

Model/type NX-2192E-EUR BOM revision level (1)  
 Category Pinpoint buss controller  
 Brand Interlogix / Aritech / SLC Technologies / Sentrol / ESL / ITI / Caddx / Casi Rusco

**Manufacturer:** GE Interlogix  
 1420 N Main; Gladewater, TX 75647 USA  
**EU Representative** GE Interlogix B.V.

Concerning	EMC
<b>A sample of the product has been tested by:</b>	CKC Laboratories Inc, 5473A Clouds Rest, Mariposa, CA 95338
Test report reference	CE qualification plan: CEQP_NX-2192 CE03-069 (CKC Laboratories Inc.)
Applied standards	EN50130-4 (1995) +A1(1998) EN55022: 1998

**Equipment class identifier** (*RF products falling under the scope of R&TTE*)

Not Applicable     None (class 1)     (class 2)

#### Means of conformity

We declare under our sole responsibility that this product is in conformity with Directive 89/336/EEC (EMC), and 93/68/EEC (Marking) based on test results using harmonized standards in accordance with the Directives mentioned.

## 15. SPECIFICATIONS

<b>Dimensions:</b>	.....	2" Wide / 9" High / 1.25" Deep
<b>Current Draw:</b>	.....	170 mA Standby Max.
<b>Operating Temperature:</b>	.....	32 to 122 degrees F
<b>Shipping Weight:</b>	.....	0.5 pounds
<b>AUX+ using 12V transformer</b>	.....	600 mA each
<b>AUX + using 12V Aux from panel</b>	.....	0 mA
<b>AUX + using 24V supply</b>	.....	0 mA

